

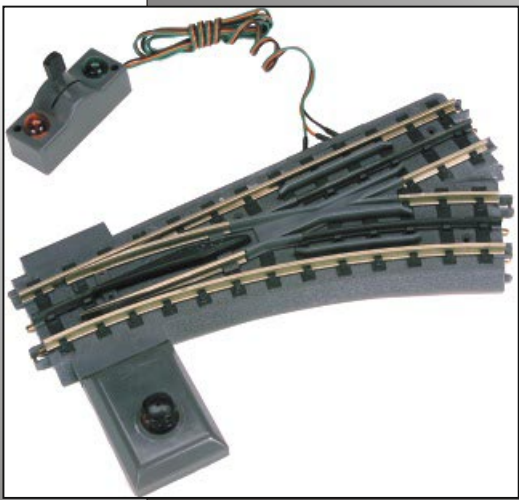


MTH[®]
ELECTRIC TRAINS, INC.

7020 Columbia Gateway Drive
Columbia, MD 21046-1532

WWW.MTH-RAILKING.COM

MTH RealTrax[®] switches add flexibility and reliability to your O



Gauge RealTrax layout. Designed to provide years of trouble free, smooth operation, RealTrax switches are the perfect additions to expand your RailKing[®] empire.

REALTRAX[®]

BY M.T.H. ELECTRIC TRAINS

O
S W I T C H

Table of Contents

Introduction:	3
Switch Operating Instructions:	4
RealTrax O-42 Switch Components:	4
Screw Terminal Definition:	6
Remote Switch Wiring Instructions:	7
Basic Switch Operation:	7
Changing Switch Block Positions:	8
Accessory Operation From Switch Power Out:	9
Multiple Connections Under Screw Terminal	9
Multiple Switch Operating Instructions (Track Power):	9
Multiple Switch Operation Through One Remote Switch, Track Power, Identical Throws:	9
Multiple Switch Operation Through One Remote Switch, Track Power, Opposite Throws:	10
Auxiliary Powered Switch Operating Instructions:	10
Multiple Switch Operation Through Separate Remote Switches	11
Multiple Switch Operation Through One Remote Switch, Auxiliary Power, Identical Throws	11
Multiple Switch Operation Through One Remote Switch, Auxiliary Power, Opposite Throws	12
RealTrax O-42 Switches In Tubular Rail Layouts:	13
Multiple Train Operation Using Powered/Unpowered Sidings:	14
Troubleshooting	15
Service and Warranty Information	16
Operating Caution	16
How to Get Service Under The Terms of The Limited One Year Warranty	16
Limited One Year Warranty	16

Introduction

Thank you for purchasing the MTH Electric Trains RealTrax O-42 Switch. As with all RealTrax products, you will find the O-42 Switch easy to install into your layout whether it be a permanent or temporary one. There are no plastic and/or metal pins to lose or confuse. The setup is simple; with only three connections of easy to attach connectors and the turn of a screw, your RealTrax Switch will be up and running in no time!

The RealTrax O-42 Switch performs all of the functions of other switches, but better. It has a double-microswitch driven non-derailing feature. Inside the Switch Block (lantern housing) are four powerful but efficient and quiet solenoid coils that drive the switch points back and forth at a voltage and current draw as yet unexperienced in model railroading. The RealTrax Switch operates on only 10Volts and 1.25Amps. It has a spring assisted mechanism that ensures that the points always will be in the correct position. If you change directions with a RealTrax Switch, you will not have to worry about derailments or electrical short circuits.

The RealTrax Switch can be wired for operation via track power or auxiliary power. Also, you will be able to operate several RealTrax Switches together by following the appropriate illustrated diagram(s) in this manual. It can be installed into a layout to have powered and unpowered sidings for multiple train operation (see figure 14).

The RealTrax O-42 Switch is constructed of sturdy ABS plastic, solid extruded rails and simple yet sturdy electronics. The design has been streamlined with features like a Switch Block Cover that hides the opening to the switch's underside and a Screw Terminal Cover that hides the traditionally unsightly yet necessary wire connections. The design follows other RealTrax items so that it blends into your layout, instead of standing out. With its ruggedness and slim styling, the RealTrax O-42 Switch will give you years of trouble-free operation on either your RealTrax or your tubular rail O-Gauge model railroad.

RealTrax® O-42 Switch Operating Instructions:

RealTrax O-42 Switch Components:

- 1) Switch:
Consists of the roadbed, rails, points, frog, screw terminals, operating circuitry and mechanisms.
- 2) Screw Terminal Cover:
Plastic cover that attaches to the roadbed and conceals the screw terminals.
- 3) Jumper:
Removable metal connector between 4th and 5th screw terminals. The Jumper acts as a switch between track and auxiliary power.
- 4) Switch Block:
Consists of housing, solenoid coils and lantern. The Switch Block attaches to either rectangular port at the converging end of the Switch. The Switch Block may be attached to either side of the switch.
(See Figure 4)
- 5) Switch Block Cover:
Plastic cover that attaches to and conceals the unused Switch Block port.
- 6) Remote Switch:
Separate manual switch with momentary action. The Remote Switch can operate your switch from anywhere on your layout.

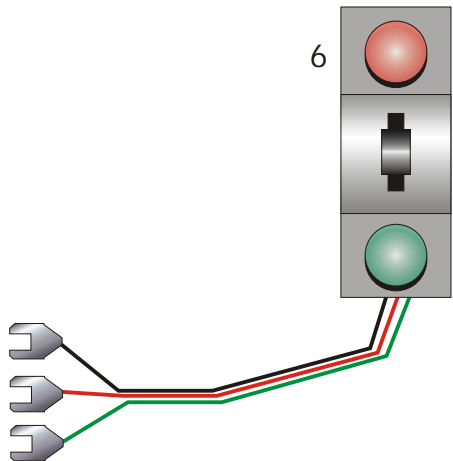
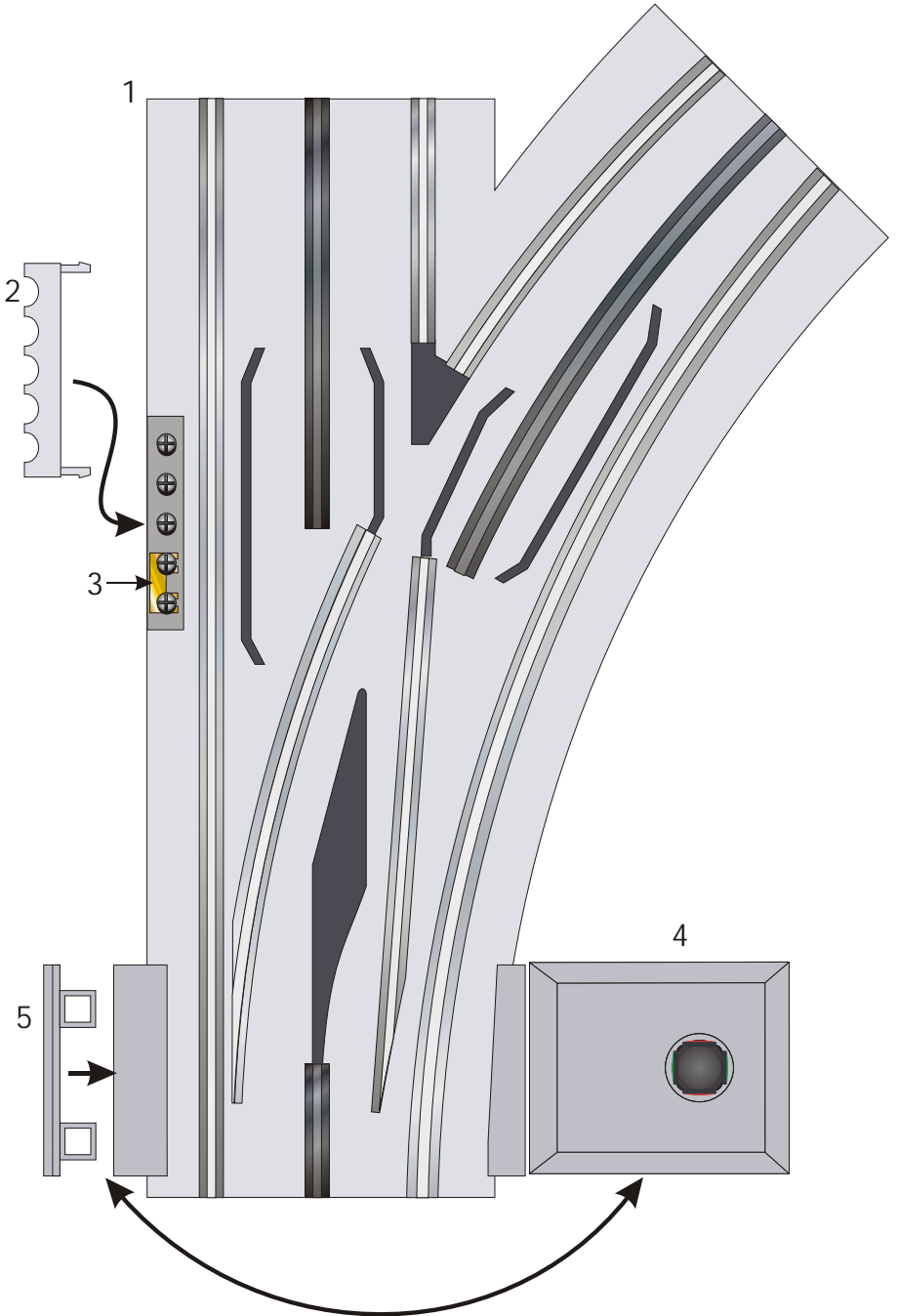


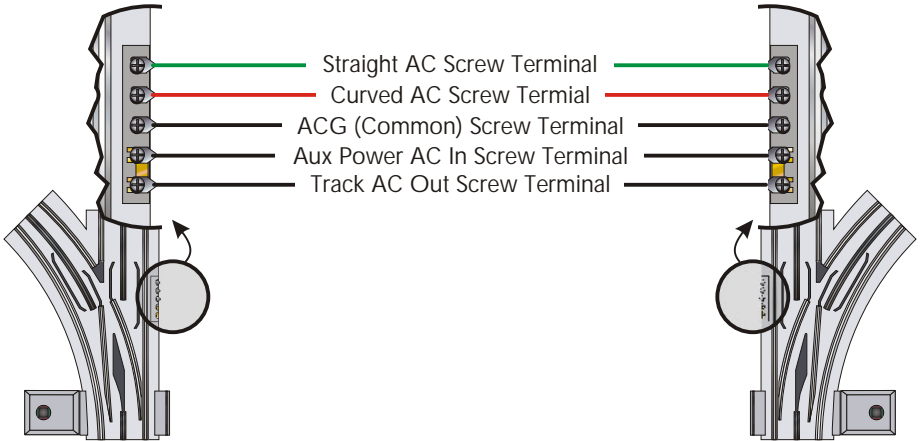
Figure 1a:



Screw Terminal Definition

There are five Screw Terminals located under the Screw Terminal Cover on the straight edge of every RealTrax Switch. The positions of the Screw Terminals on a Right-Hand Switch mirror those on the Left-Hand Switch (see figure 1b, below).

Figure 1b:



Straight AC Screw Terminal: This Screw Terminal is the input connection of AC power that causes the points (rails that shift positions) to align with the straight direction of travel. The Straight AC Screw Terminal may be connected to either the GREEN wire of the Remote Switch or an external AC power source.

Curved AC Screw Terminal: This Screw Terminal is the input connection of AC power that causes the points (rails that shift positions) to align with the curved direction of travel. The Curved AC Screw Terminal may be connected to either the RED wire of the Remote Switch or an external AC power source.

ACG (Common) Screw Terminal: This Screw Terminal is the electrical ground connection for all power and Remote Switch inputs.

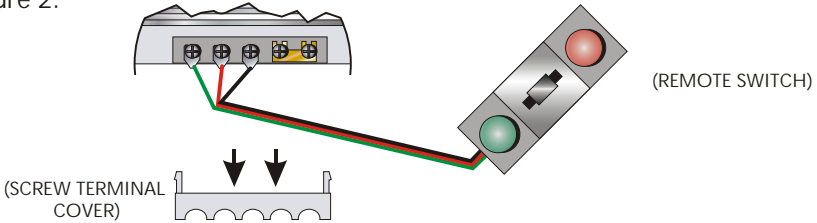
Auxiliary Power AC In Screw Terminal: This Screw Terminal is the input connection of an outside power source's AC (powered) terminal. (Note: the jumper between the Auxiliary Power AC In Screw Terminal and the Track AC Out Screw Terminal must be removed to operate your switch via auxiliary power).

Track AC Out Screw Terminal: This Screw Terminal is connected directly to track power (center rail).

Remote Switch Wiring Instruction

You will have to wire the RealTrax O-42 Remote Control Switch to the proper Screw Terminals. To do this, follow Illustration 2:

Figure 2:

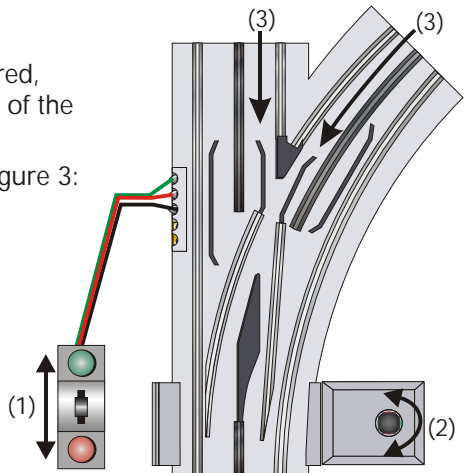


- Connect the GREEN wire of the REMOTE SWITCH to the Straight AC SCREW TERMINAL (found under the removable SCREW TERMINAL COVER).
- Connect the RED wire of the REMOTE SWITCH to the Curved AC SCREW TERMINAL.
- Connect the BLACK wire of the REMOTE SWITCH to the ACG (Common) SCREW TERMINAL.
- The JUMPER between the fourth and fifth SCREW TERMINALS remains in place.

Basic Switch Operation:

Now that your RealTrax Switch is wired, you will be able to operate it via any of the following methods:

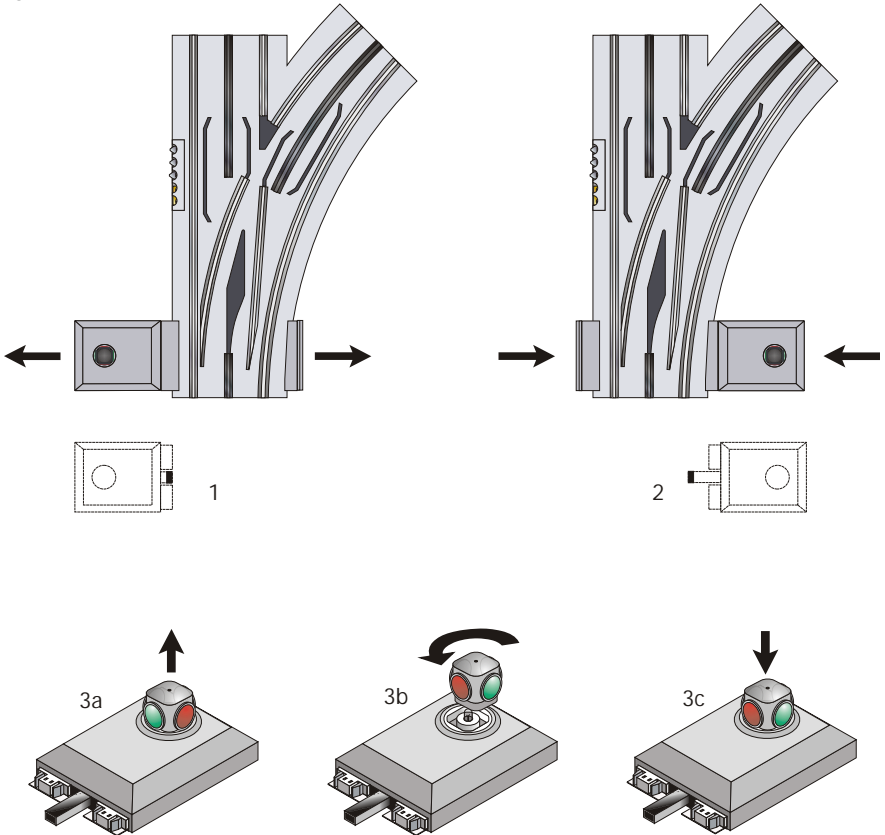
Figure 3:



- Remote Switch operation (1). Push the remote switch lever toward the green light for 'straight' operation. Push the remote switch lever toward the red light for 'curved' operation.
- Manual (lantern) operation (2). Simply turn the lantern on the Switch Block to align the points in the desired direction.
- Automatic non-derail operation (3). If your consist enters the diverging end of the switch, the points will automatically align to the correct orientation (if necessary).

Changing Switch Block Position:

Figure 4:

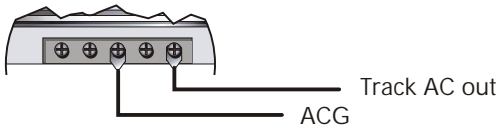


To change the position of the Switch Block, follow the steps below:

- 1) Remove the Switch Block by pulling it firmly out of the roadbed. Remove the Switch Block Cover by sliding it down out of the roadbed.
- 2) Install the Switch Block into the other side by pushing it firmly into the roadbed. Install the Switch Block Cover into the other side.
- 3) You will have to change the position of the Switch Block Lantern so that the Green lenses align to the straight direction and the red lenses align to the curved direction.
 - a) Hold the Switch Block Lantern between your thumb and forefinger. Gently pull the Lantern out of its socket.
 - b) Rotate the Lantern 90 Degrees (one-quarter turn).
 - c) Press the Lantern back into the Switch Block. You will hear a "snap" when it is in place.

Accessory Operation from Switch Track AC Out Screw Terminal:

Figure 5:

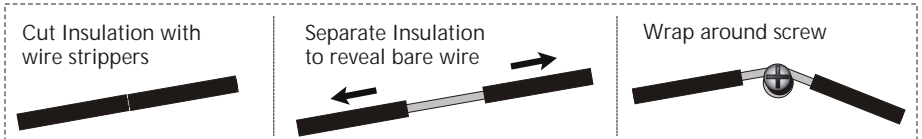


- Connect the ACG (Common) terminal of the accessory to the ACG (Common) screw terminal of the Switch.
- Connect the AC (Powered) terminal of the accessory to the Track AC Out screw terminal of the Switch.

Making Multiple Connections Under One Screw Terminal

If you do not use female disconnect type connectors to make your wire terminations for multiple connections, you are encouraged to reduce the number of wires under each Screw Terminal by stripping a section in the middle of a single wire (see figure 6, below):

Figure 6:

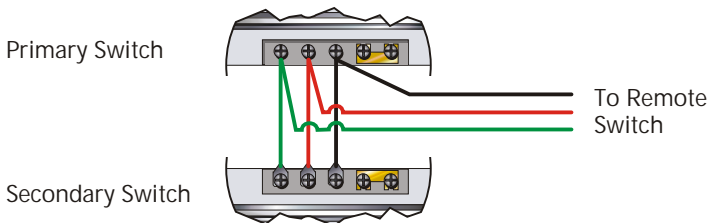


(Note: MTH recommends that 18 gauge or thicker wire be used in wiring the RealTrax switch.)

RealTrax® O-42 Switch Multiple Switch Operation

Multiple switch operation through one Remote Switch (track power, identical throws):

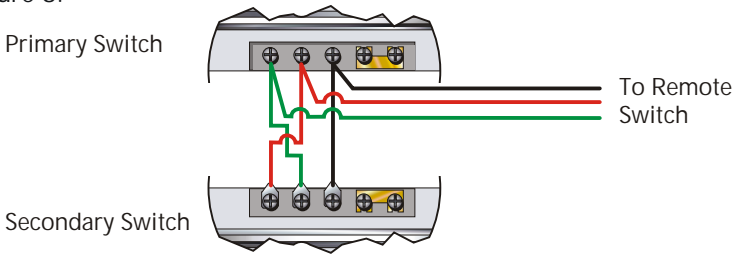
Figure 7:



- Connect Remote Switch as shown in Figure 2.
- Connect the STRAIGHT AC screw terminal of the Primary Switch to the STRAIGHT AC screw terminal of the Secondary Switch.
- Connect the CURVED AC screw terminal of the Primary Switch to the CURVED AC screw terminal of the Secondary Switch.
- Connect the ACG (Common) screw terminal of the Primary Switch to the ACG (Common) screw terminal of the Secondary Switch.

Multiple switch operation through one Remote Switch (track power, simultaneous opposite throws):

Figure 8:



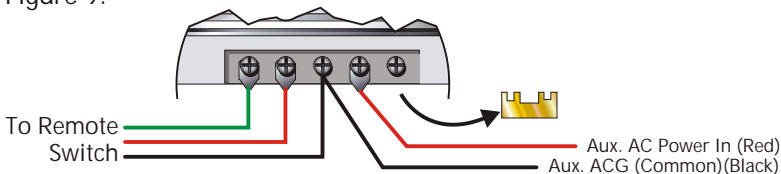
- Connect Remote Switch as shown in Figure 2.
- Connect the STRAIGHT AC screw terminal of the Primary Switch to the CURVED AC screw terminal of the Secondary Switch.
- Connect the CURVED AC screw terminal of the Primary Switch to the STRAIGHT AC screw terminal of the Secondary Switch.
- Connect the ACG (Common) screw terminal of the Primary Switch to the ACG (Common) screw terminal of the Secondary Switch.

Auxiliary Powered Switch Operating Instructions

The RealTrax Switch can be powered from an auxiliary power source (either another channel on your transformer or a separate transformer altogether). Powering your Switch from auxiliary power will ensure that varying track power does not affect the action of the switch. Also, if you operate at low voltages or wish to operate many switches at once, auxiliary power operation may be desirable.

Auxiliary power switch operation (to power switch from source other than track power):

Figure 9:

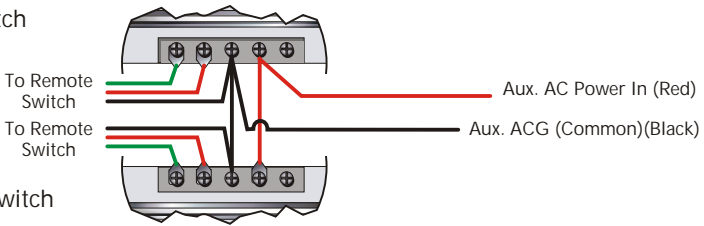


- Remove Jumper between Track AC Out terminal and Aux. Power AC In terminals (Save the jumper for future use).
- Connect Remote Switch as shown in Figure 2.
- Connect Auxiliary Power AC to Auxiliary Power AC In screw terminal
- Connect Auxiliary Power ACG (Common) to ACG (Common) screw terminal.

Auxiliary power operation of multiple switches through separate Remote Switches (separate throws):

Figure 10:

Primary Switch



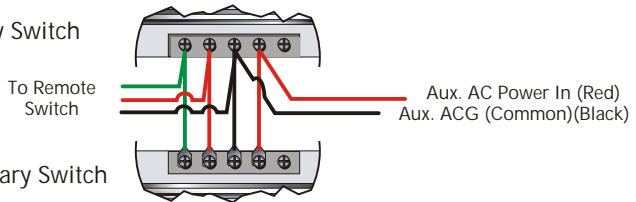
Secondary Switch

- Remove Jumpers from all auxiliary powered switches.
- Connect Remote Switches as shown in Figure 2.
- Connect Auxiliary Power ACG (Common) to all auxiliary powered switch ACG screw terminals, either in series (from one Switch ACG terminal to the next, as shown) or in parallel (each Switch ACG terminal is wired directly to the auxiliary power source).
- Connect Auxiliary Power AC to all auxiliary powered switch Aux. Power In AC screw terminals, either in series (from one Switch AC terminal to the next) or in parallel (each Switch AC terminal is wired directly to the auxiliary power source).

Auxiliary power operation of multiple switches through single Remote Switch (simultaneous identical throws):

Figure 11:

Primary Switch

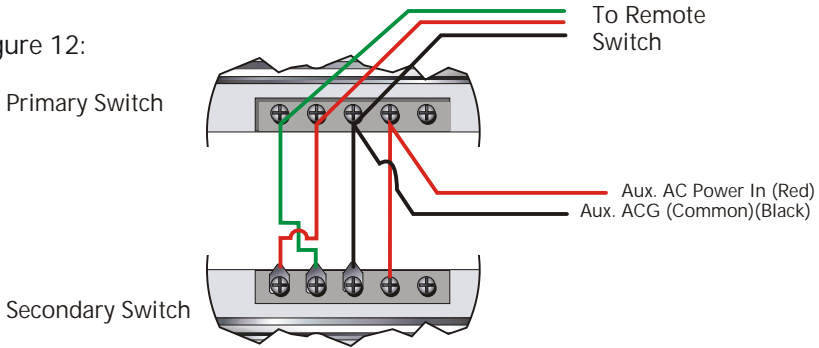


Secondary Switch

- Remove Jumpers from all auxiliary powered switches.
- Connect Remote Switch to primary switch as shown in Figure 2.
- Connect Auxiliary Power AC to Auxiliary Power AC In screw terminal of primary switch.
- Connect Auxiliary Power ACG (Common) to ACG (Common) screw terminal of primary switch.
- Connect the STRAIGHT AC screw terminal of the Primary Switch to the STRAIGHT AC screw terminal of the Secondary Switch.
- Connect the CURVED AC screw terminal of the Primary Switch to the CURVED AC screw terminal of the Secondary Switch.
- Connect the ACG (Common) screw terminal of the Primary Switch to the ACG (Common) screw terminal of the Secondary Switch.
- Connect Aux AC Power In screw terminal of the Primary Switch to the Aux AC Power In screw terminal of the secondary switch.

Auxiliary power operation of multiple switches through single Remote Switch (simultaneous opposite throws):

Figure 12:

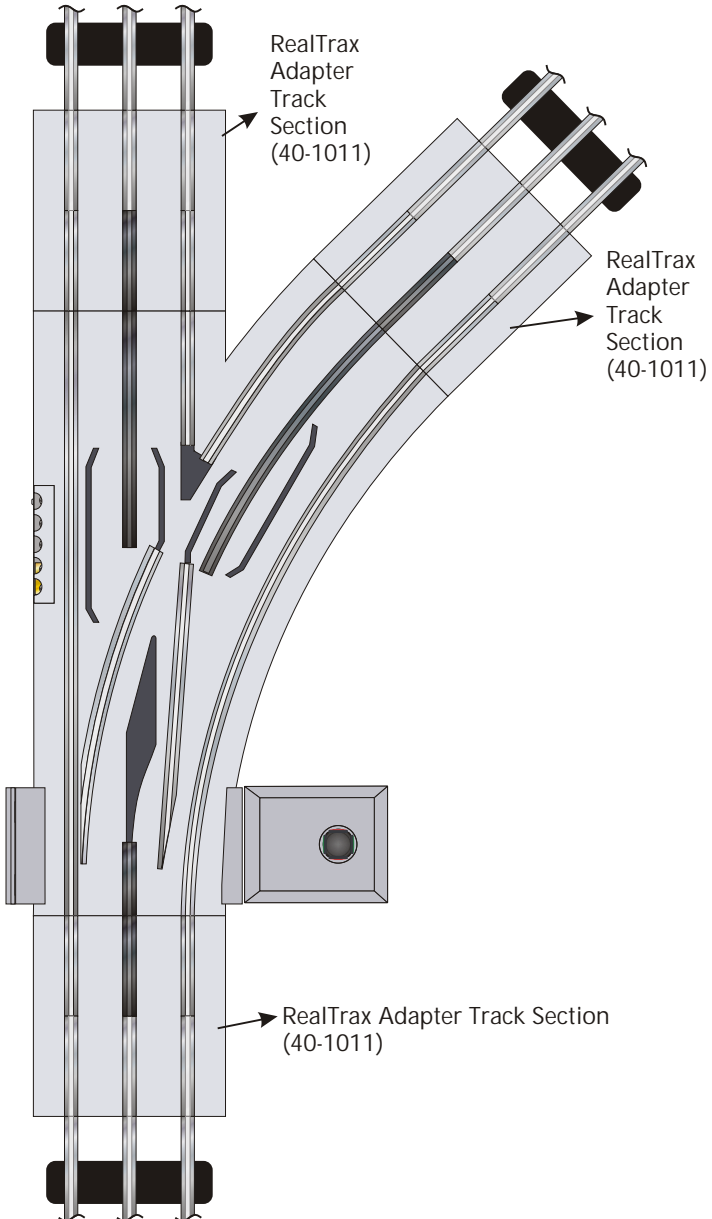


- Remove Jumpers from all auxiliary powered switches.
- Connect Remote Switch to primary switch as shown in Figure 2.
- Connect Auxiliary Power AC to Auxiliary Power AC In screw terminal of primary switch.
- Connect Auxiliary Power ACG (Common) to ACG (Common) screw terminal of primary switch.
- Connect the STRAIGHT AC screw terminal of the Primary Switch to the CURVED AC screw terminal of the Secondary Switch.
- Connect the CURVED AC screw terminal of the Primary Switch to the STRAIGHT AC screw terminal of the Secondary Switch.
- Connect the ACG (Common) screw terminal of the Primary Switch to the ACG (Common) screw terminal of the Secondary Switch.
- Connect Aux AC Power In screw terminal of the Primary Switch to the Aux AC Power In screw terminal of the secondary switch.

RealTrax® O-42 Switches In Tubular Rail Layouts:

The RealTrax O-42 Switch can be installed into O-Gauge tubular rail layouts with the use of three RealTrax Adapter Track sections. Simply attach one Adapter Track section (5" long) to each arm of the RealTrax O-42 Switch. The steel pins of your tubular track will insert into the tubular rail portion of the RealTrax Adapter Track.

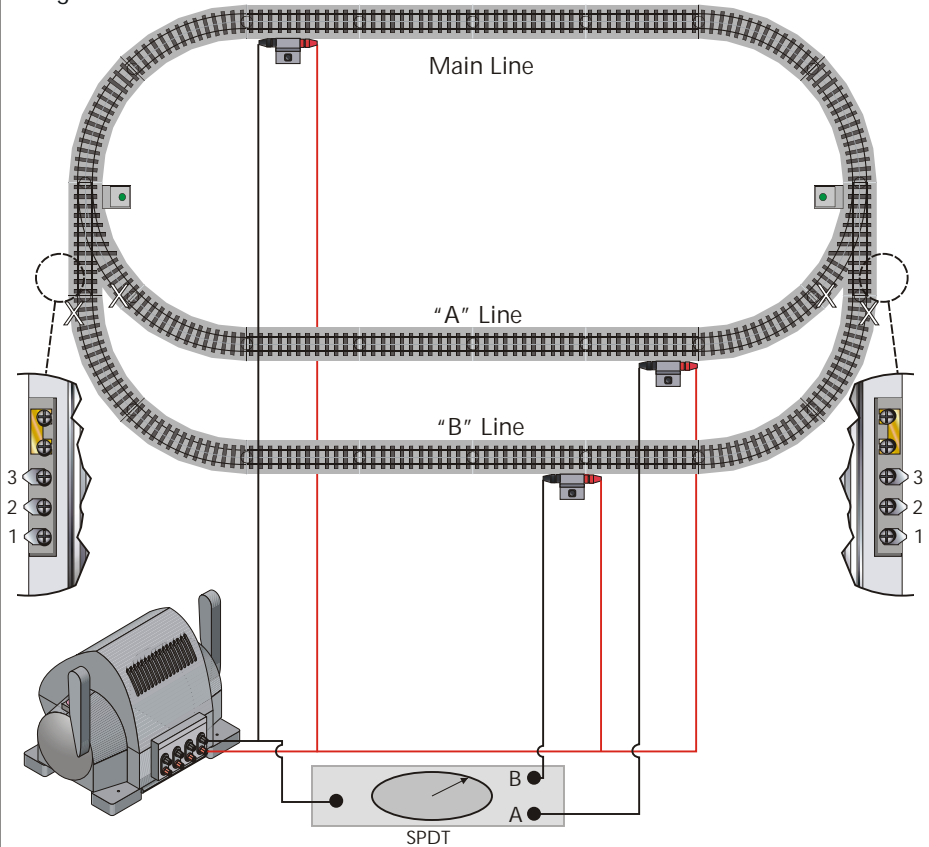
Figure 13:



Multiple Train Operation (Powered/Unpowered Siding)

The following layout wiring diagram illustrates the use of two switches wired for simultaneous operation, identical throw. With this wiring arrangement, you will be able to operate two trains on your layout without collision (provided that no part of either consist obstructs the "Main Line" portion of the layout).

Figure 14:



Layout Instructions:

Note: this layout requires a Single Pole, Double Throw switch (minimum 3A rating) available at a hardware or electrical store.

- 1) To assemble a RealTrax layout for Powered, Unpowered Siding Operation, you will have to isolate the outside rail of the "A" Line and the outside rail of the "B" Line. To do this, bend back and remove the brass connector under one end of the rail that is to be isolated (marked with an "X" on the layout in figure 14).
- 2) Assemble the layout as shown.

Wiring Instructions:

- 1) Connect the Powered (Red) transformer output to the Powered (Red, center rail) terminals of the Main Line, "A" Line and "B" Line lock-ons.
- 2) Connect the Common (Black) transformer output to the Common (Black, outside rail) terminal of the Main Line lock-on.
- 3) Connect the Common (Black) transformer output to the input side of a Single-Pole, Double Throw (SPDT) switch (purchased separately).
- 4) Connect one output terminal of the SPDT switch to the Common (Black, outside rail) terminal of "A" Line. Connect the other output terminal of the SPDT switch to the Common (Black, outside rail) terminal of "B" Line.
- 5) Connect the RealTrax Switches as shown in figure 7 for track power operation or as shown in figure 11 for auxiliary power operation.

*RealTrax layout created with RR-Track™ available from R&S Enterprises

Troubleshooting

Symptom	Remedy
Switch will not operate at all. Switch Block Lantern is not illuminated.	If using track power to operate the switch, check that the jumper between the Track AC Out Screw terminal and the Auxiliary AC Power In Screw Terminal is installed. If using Aux Power, check connection.
Switch will not operate. Switch Block Lantern is illuminated	If using auxiliary power to operate the switch, check that the jumper between the Track AC Out Screw Terminal and the Auxiliary AC Power In Screw Terminal is removed. If using track power, check connection.
Switch Points do not align completely into either the "straight" or "curved" position	Check that the operating voltage (track or auxiliary) is at least 10V. If operating your consist at < 10V, use auxiliary power for your switch(es).
Screw Terminal Cover will not fully attach to the roadbed - gap	Realign Remote Switch spade connectors to be perpendicular to the edge of the roadbed. If multiple wires under Screw Terminals, use female spade type connectors like those found on the ends of the Remote Switch wires.

CAUTION - ELECTRICALLY OPERATED PRODUCT:

Not recommended for children under eight years of age without adult supervision. As with all electric products, precautions should be observed during handling and use to reduce the risk of electric shock.

WARNING: When using electrical products, basic safety precautions should be followed including the following:

- Read this manual thoroughly before using this device.
- MTH recommends parents examine the Switch periodically for conditions that may result in the risk of fire, electric shock, or injury to persons, such as damage to wires, clips or other parts, and that, in an event such conditions exist, the Switch should not be used until properly repaired.
- This Switch is intended to be used indoors. Do not use if water is present. Serious or fatal injury may result.
- Do not operate the Switch with damaged wires or clips.
- If damaged call MTH service for instructions.
- Do not use this Switch for other than its intended purpose. This unit was designed to operate with any AC or DC output toy train transformer. See the individual transformer's operating manual for more operating and safety information.

Service & Warranty Information

How to Get Service Under the Terms of the Limited One-Year Warranty

When you suspect an item is defective, please check the operator's manual for standard operation and trouble-shooting techniques that may correct the problem. Additional information may be found on the M.T.H. Website. Should you still require service, follow the instructions below to obtain warranty service.

First, e-mail, write, call or fax a M.T.H. Authorized Service Center (ASC) in your area to obtain Repair Authorization. You can find the list of ASCs on the M.T.H. Website, www.mth-railking.com. Authorized Service Centers are required to make warranty repairs on items sold *only* from that store; all other repairs may-- or may not be done at the store's own discretion. If you did not purchase the item directly from the ASC, you will need to select a National Authorized Service Center (NASC). These centers are compensated by M.T.H. to perform warranty service for any customer whose repair qualifies for warranty service. A list of NASC retailers can be located on the M.T.H. Website or by calling 1-888-640-3700. Should the warranty no longer apply, you may choose either an ASC or NASC retailer to service your M.T.H. Product. A reasonable service fee will be charged.

CAUTION: Make sure the product is packed in its original factory packaging including its foam and plastic wrapping material to prevent damage to the merchandise. There is no need to return the entire set if only one of the components is in need of repair *unless otherwise instructed by the Service Center. **The shipment must be prepaid and we recommend that it be insured. A cover letter including your name, address, daytime phone number, e-mail address (if available), Return Authorization number (if required by the service center, a copy of your sales receipt and a full description of the problem must be included to facilitate the repairs. Please include the description regardless of whether you discussed the problem with a service technician when contacting the Service Center for your Return Authorization.***

Please make sure you have followed the instructions carefully before returning any merchandise for service. Authorized M.T.H. Service Centers are independently owned and operated and are not agents or representatives of M.T.H. Electric Trains. M.T.H. assumes no responsibility, financial or otherwise, for material left in their possession, or work done, by privately owned M.T.H. Authorized Service Centers.

If you need assistance at any time email MTH Service at service@mth-railking.com, or call 410 381-2580.

Limited One-Year Warranty

All M.T.H. products purchased from an Authorized M.T.H. Train Merchant are covered by this warranty.

See our website at www.mth-railking.com or call 1-888-640-3700 to identify an Authorized M.T.H. Train Merchant near you.

M.T.H. products are warranted for one year from the date of purchase against defects in material or workmanship, excluding wear items such as light bulbs, pick-up rollers, batteries, smoke unit wicks, and traction tires. We will repair or replace (at our option) the defective part without charge for the parts or labor, if the item is returned to an M.T.H. Authorized Service Center (ASC) or M.T.H. National Authorized Service Center (NASC) within one year of the original date of purchase. This warranty does not cover damages caused by improper care, handling, or use. Transportation costs incurred by the customer are not covered under this warranty.

Items sent for repair must be accompanied by a return authorization number, a description of the problem, and a **copy of the original sales receipt from an Authorized M.T.H. Train Merchant**, which gives the date of purchase. If you are sending this product to an Authorized Service Center, contact that Center for their return authorization.

This warranty gives you specific legal rights, and you may have other rights that vary from state to state. Specific questions regarding the warranty may be forwarded to M.T.H. directly.

Service Department
M.T.H. Electric Trains
7020 Columbia Gateway Drive
Columbia MD 21046-1532



AUTHORIZED SERVICE CENTER

7020 Columbia Gateway Dr. - Columbia, MD 21046

Information: 410-381-2580 Fax: 410-381-6122

www.mth-railking.com

PARTICIPATING N.A.S.C. RETAILER LIST

CANADA

TOY TRAIN WORKSHOP
CUMBERLAND
613-833-8331

THE TRAIN ROOM
FERGUS
519-787-3280

CALIFORNIA

TIN PLATE JUNCTION
OAKLAND
510-444-4780

COLORADO

MIZELL TRAINS INC
WESTMINSTER
303-429-4811

CONNECTICUT

NEW ENGLAND HOBBY
SUPPLY
MANCHESTER
860-646-0610

FLORIDA

ROUNDHOUSE SOUTH
PORT ORANGE
386-304-7002

MARYLAND

PLAZA HOBBY
CUMBERLAND
301-729-6424

ENGINE HOUSE HOBBIES
GAITHERSBURG
301-590-0816

CATOCTIN MOUNTAIN TRAINS
& HOBBIES
THURMONT
301-694-8331

MICHIGAN

MICHIGAN MODEL TRAIN
CENTER
PINCKNEY
734-426-1651

BRASSEUR ELECTRIC TRAINS
INC.
SAGINAW
989-793-4753

NEW HAMPSHIRE

TREASURED TOYS
SALEM
603-898-7224

NEW YORK

AURORA RAILS & HOBBIES
EAST AURORA
716-652-5718

OHIO

DAVIS ELECTRONICS
MILFORD
513-831-6425

RICK'S TOY TRAINS
TOLEDO
419-478-0171

PENNSYLVANIA

BUSSINGER TRAINS
AMBLER
215-628-2366

FAIRCHANCE PHARMACY
FAIRCHANCE
724-564-7817

TOBY TYLER'S HOBBY
CENTER
PITTSBURGH
412-653-5030

VIRGINIA

LOCUST GROVE TRAINS
LOCUST GROVE
540-854-8955

DAVIS HOBBY SUPPLIES
PORTSMOUTH
757-397-1983

T S G HOBBIES
WARRENTON
540-347-9212

WISCONSIN

SOMMERFELD'S TRAINS
BUTLER
262-783-7797

GRAMPA'S TRAIN SHOP
RICE LAKE
715-234-2996



AUTHORIZED SERVICE CENTER

7020 Columbia Gateway Dr. - Columbia, MD 21046

Information: 410-381-2580 Fax: 410-381-6122

www.mth-railking.com

PARTICIPATING A.S.C. RETAILER LIST

CANADA

TOY TRAIN WORKSHOP
CUMBERLAND
613-833-8331

THE TRAIN ROOM
ERGUS
519-787-3280

CREDIT VALLEY RAILWAY
COMPANY
STREETSVILLE
905-826-1306

B H TRAINS
TERREBONNE
450-492-0317

ALABAMA
SOUTHERLAND STATION
HUNTSVILLE
256-533-4720

LIL' BOBBY'S HOBBIES
MONTGOMERY
334-277-1715

ARIZONA
ARIZONA TRAIN DEPOT
MESA
480-833-9486

CALIFORNIA
CENTRAL COAST TRAINS
ATASCADERO
805-466-1391

TRAIN SHACK
BURBANK
818-842-3330

ROUNDHOUSE
NORTH HOLLYWOOD
818-769-0403

DOLLHOUSES TRAINS & MORE
NOVATO
415-883-0388

TIN PLATE JUNCTION
OAKLAND
510-444-4780

RON'S WORLD
SAN CLEMENTE
949-361-5596

TRUCKS & TRAINS HOBBIES
SANTA ROSA
707-537-6586

COLORADO
CUSTOM RAILWAY SUPPLY
COLORADO SPRINGS
719-634-4616

CABOOSE HOBBIES
DENVER
303-777-6766

MIZELL TRAINS
WESTMINSTER
303-429-4811

CONNECTICUT
NEW ENGLAND HOBBY
SUPPLY
MANCHESTER
860-646-0610

FLORIDA
HOLLYWOOD STATION
HOLLYWOOD
954-921-2700

DEPOT HOBBY SHOP
LAKE WORTH
561-585-1982

READY TO ROLL
MIAMI
305-688-8868

FRANK'S TRAINS & HOBBIES
OLDSMAR
813-855-1041

COLONIAL PHOTO & HOBBY
ORLANDO
407-841-1485

WARRICK CUSTOM HOBBIES
PLANTATION
954-370-0708

ROUNDHOUSE SOUTH
PORT ORANGE
386-304-7002

ILLINOIS
BIKE & CHOO CHOO
CONNECTION
SCHAUMBURG
847-882-7728

INDIANA
Y. O. R. K. TRAINS
MUNSTER
219-838-9999

SAMUELSON'S TRAIN SHOP
VALPARAISO
219-462-2708

IOWA
CABOOSE STOP HOBBIES
CEDAR FALLS
800-642-7012

KENTUCKY
L&N TRAINS & THINGS
LOUISVILLE
502-897-9005

LOUISIANA
AMERICA'S TRAIN YARD
BATON ROUGE
225-926-5592

MAINE

WHEELS, WINGS & THINGS
LUDLOW
207-532-6277

MARYLAND

PLAZA HOBBY
CUMBERLAND
301-729-6424

HOBBYTOWN U S A
FREDERICK
301-694-7395

ENGINE HOUSE HOBBIES
GAITHERSBURG
301-590-0816

J & B TRAINS
HAGERSTOWN
240-420-4930

THE TRAIN ROOM
HAGERSTOWN
301-745-6681

PURKEY'S TOY TRAINS
SYKESVILLE
410-549-6061

CATOCTIN MOUNTAIN TRAINS
& HOBBIES
THURMONT
301-694-8331

MASSACHUSETTS

NORTHEAST TRAINS
PEABODY
978-532-1615

EAST BAY HOBBIES
SEEKONK
508-336-5573

MICHIGAN

MICHIGAN MODEL TRAIN
CENTER
PINCKNEY
734-426-1651

BRASSEUR ELECTRIC TRAINS
INC.
SAGINAW
989-793-4753

MISSOURI

SWITCH STAND
SAINT LOUIS
314-781-4458

MARK TWAIN HOBBYCENTER
ST. LOUIS
636-946-2816

NEVADA

RENO RAILS
RENO
775-337-6669

NEW HAMPSHIRE

RAILROAD SPECIALTIES
NASHUA
603-801-0801

TREASURED TOYS

SALEM
603-898-7224

NEW JERSEY

COUNTRY AND STUFF
ANDOVER
973-786-7086

COLUMBUS TRAIN STATION

COLUMBUS
609-518-1800

ATLANTIC RAILS

HAMMONTON
609-567-8490

GRAND CENTRAL STATION

KEARNY
201-955-6200

J & B TRAINS, INC.

MAPLE SHADE
856-414-0092

HOBBY SHOP

MATAWAN
732-583-0505

HOBBYMASTERS, INC

RED BANK
732-842-6020

RIDGEFIELD HOBBY

RIDGEFIELD
201-943-2636

TOM'S MODEL TRAINS

SCOTCH PLAINS
908-322-6122

TRAINS & THINGS

TRENTON
609-883-8790

COAST TRAINS AND

COLLECTIBLES
WALL
732-556-9005

HOLLY BEACH TRAIN DEPOT

WILDWOOD
609-522-2379

NEW YORK

AURORA RAILS & HOBBIES
EAST AURORA
716-652-5718

NASSAU HOBBY CENTER, INC.

FREEMPORT
516-378-9594

HOBBY WORLD

MONTICELLO
845-794-8770

CITY DEPOT, INC.

NEW HAMPTON
845-374-3010

SCAG'S ELECTRIC TRAINS

STATEN ISLAND
718-727-7373

AMERICANA STORE

TIVOLI
845-757-4246

KROSS HARDWARE

WEST BABYLON
631-669-3069

NORTH CAROLINA

THE ROUNDHOUSE &
BACKSHOP
CARY
919-465-0810

TRAINS LTD.

CHARLOTTE
704-566-9070

DRY BRIDGE STATION

MOUNT AIRY
336-786-9811

THE FREIGHT YARD

SMITHFIELD
919-934-6229

TRAIN LOFT

WINSTON-SALEM
336-760-9817

OHIO**GLEN'S TRAIN SHOP**

AKRON
330-253-6527

E & S TRAINS

AKRON
330-745-0785

T & K HOBBY SHOP

BRIDGEPORT
740-633-6607

PARMAHOBBY

CLEVELAND
216-741-6440

SANDY'S HOBBY'S &

COLLECTIBLES

ELYRIA
440-365-9999

HUDSON TOY, TRAIN &

HOBBY

HUDSON
330-653-2997

CLEARVIEW TRAIN & HOBBY

LORAIN
440-277-4488

DIXIE UNION STATION

MASON
513-459-0460

DAVIS ELECTRONICS

MILFORD
513-831-6425

TRAINS-N- THINGS
NORTH CANTON
330-499-1666

GRAND PACIFIC JUNCTION
OLMSTEAD FALLS
440-235-4777

RICK'S TOY TRAINS
TOLEDO
419-478-0171

ERIE RAILWAY DEPOT
TROY
937-440-9972

PENNSYLVANIA
AMERICAN HOBBY CENTER
ALIQUIPPA
724-378-3930

ALLENTOWN TOY TRAIN
SERVICE
ALLENTOWN
610-821-0740

ON THE RIGHT TRACK
ALTOONA
814-942-4345

BUSSINGER TRAINS
AMBLER
215-628-2366

JIM'S HOBBY SERVICE
BERWICK
570-759-2695

YE OLDE TRAIN & CHRISTMAS
SHOPPE
BOYERTOWN
610-369-0755

NICHOLAS SMITH
BROOMALL
610-353-8585

CHARLEROI SWEEPER
CENTER
CHARLEROI
724-483-3397

CRANBERRY HOBBY DEPOT
CRANBERRY TWP
724-776-3640

FAIRCHANCE PHARMACY
FAIRCHANCE
724-564-7817

TOY TRAIN STATION
FEASTERVILLE TREV
215-322-5182

THE CABOOSE
LEHIGHTON
570-386-5352

HOBBY CITY
MC MURRAY
724-942-2557

THE STATION
NEW CUMBERLAND
717-774-7096

FRYER'S STORE
ORWIGSBURG
570-366-2258

CHESTNUT TOYBOX
PHILADELPHIA
215-545-0455

TOBY TYLER'S HOBBY
CENTER
PITTSBURGH
412-653-5030

WILCOX GREENHOUSE &
NURSERY
TITUSVILLE
814-827-3823

EASTERN DEPOT
TROY
570-297-1975

J&J RAILROAD CROSSING
TURTLE CREEK
412-824-6009

TRAINS R FUN
FRAZER
610-644-4585

SOUTH CAROLINA
EMERALD TRAIN & HOBBY
GREENWOOD
864-223-2247

TENNESSEE
MODEL RAILROAD & HOBBY
SHOP
MEMPHIS
901-384-6500

TEXAS
HOBBY TIME
AMARILLO
806.352.9660

RIVERVIEW TRAINS
ANGLETON
979-848-3895

GREAT TRAINS & HOBBIES
LONGVIEW
903-757-2720

VIRGINIA
LEESBURG HOBBIES
LEESBURG
703-779-8600

LOCUST GROVE TRAINS
LOCUST GROVE
540-854-8955

TRAIN DEPOT
MANASSAS
703-335-2216

CHESTERFIELD HOBBIES
MIDLOTHIAN
804-379-9091

DAVIS HOBBY SUPPLIES
PORTSMOUTH
757-397-1983

TOY TRAIN CENTER
RICHMOND
804-288-4475

NUTBUSH EXPRESS
VICTORIA
434-696-1902

T S G HOBBIES
WARRENTON
540-347-9212

NORGE STATION
WILLIAMSBURG
757-564-7623

WASHINGTON
EASTSIDE TRAINS
KIRKLAND
425-828-4098

WEST VIRGINIA
PATRICK'S TRAINS
WHEELING
304-232-0714

WISCONSIN
WOODCRAFTERS SHOP
BURLINGTON
262-763-5239

SOMMERFELD'S TRAINS
BUTLER
262-783-7797

HOBBY OUTLET
FOND DU LAC
920-924-3770

G B T V & TRAINS
GREEN BAY
920-496-9697

GRAMPA'S TRAIN SHOP
RICE LAKE
715-234-2996

THE TRAIN STORE
WAUKESHA
262-650-6675