

RAILKING[®]
By M.T.H. Electric Trains

USRA Steam Engine 2-8-8-2

30-1156-1
30-1156-0
30-1157-1
30-1157-0

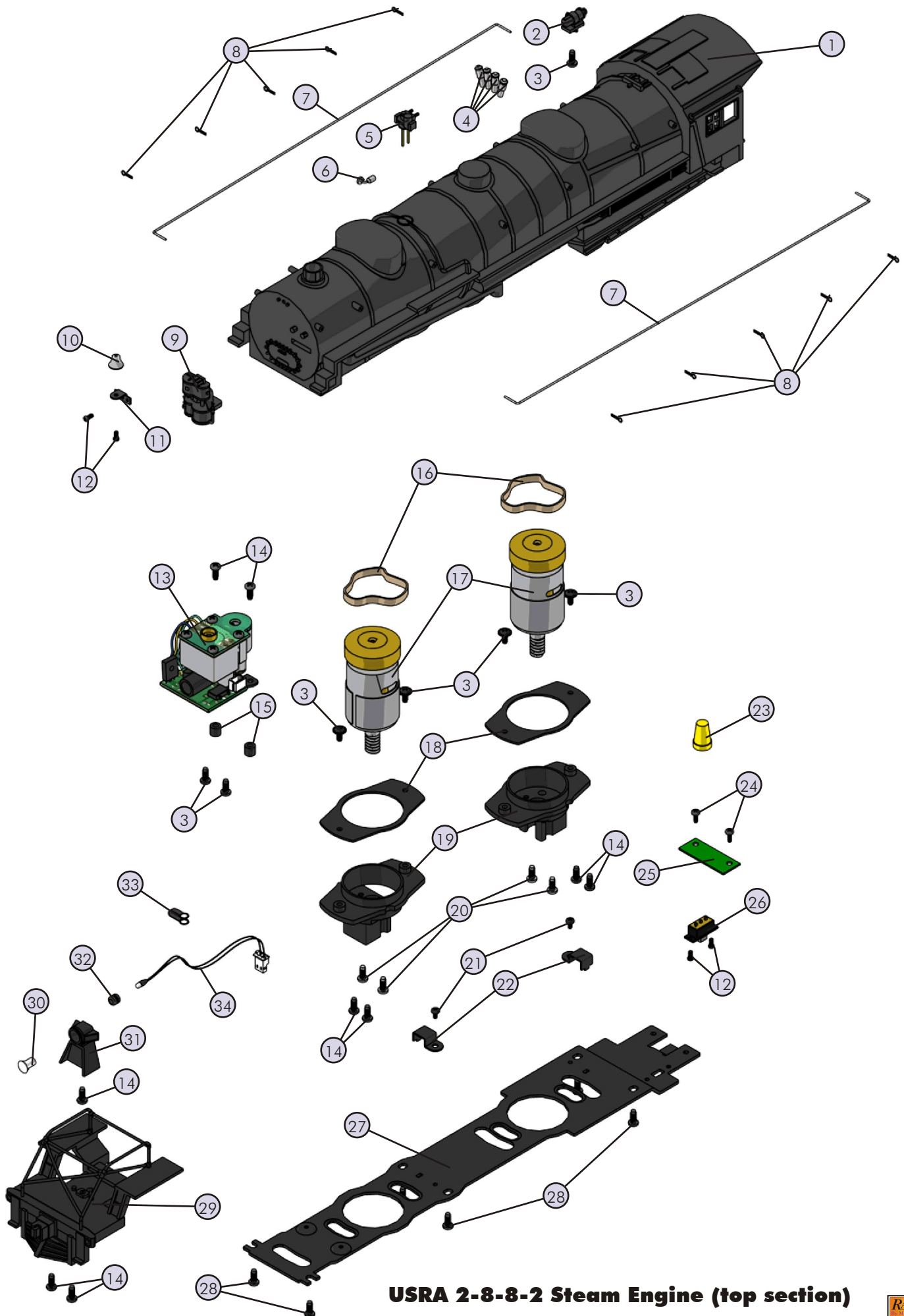


USRA 2-8-8-2 Steam Engine (top section)

Engine Parts

Name and Number	Part #	\$Price Per Unit
1.) Shell (Pennsylvania)(# 373) (Brunswick green, Tuscan red & graphite) (gold numbers)	FB-1200186	*165.00
1.) Shell (Northern Pacific) (# 4502)(black & graphite)(white numbers)	FB-1200187	*165.00
2.) Steam generator (Brunswick green)(Pennsylvania)	FB-1200188	6.00
2.) Steam generator (black) (Northern Pacific)	FB-1200189	6.00
3.) Screw (4/40x6.0mm)(roundhead)	IA-0000003	0.15
4.) Pop-off valve (nickel)	FB-1200074	2.00
5.) Check valve (Brunswick green)(Pennsylvania)	FB-1200190	6.00
5.) Check valve (black) (Northern Pacific)	FB-1200191	6.00
6.) Whistle (nickel)	FB-1200003	4.00
7.) Handrail (nickel) (boiler)(250.0mm long)(1.0mm thick wire)	FB-1200192	3.00
8.) Stanchion (black)	FB-1200024	0.25
9.) Compressor (black)	FB-1200193	12.00
10.) Bell (nickel)	FB-1200194	4.00
11.) Bracket (bell)(black)	IH-0000173	2.00
12.) Screw (M2x4.0mm)(roundhead)	IA-0000058	0.15
13.) Smoke unit (complete w/ board & bracket)	AA-0000031	50.00
14.) Screw (4/40x8.0mm)(roundhead)	IA-0000011	0.15
15.) Spacer (3.0x6.0x4.3mm)(plastic)	ID-0000071	0.15
16.) Rubber band	BI-4500004	0.50
17.) Motor (RS-385PH) (6.4x17.0mm worm gear)(12.5mm long threads) (10.0x30.0mm brass tapered flywheel)	BE-0000078	25.00
18.) Motor plate (black) (stamped metal)	BI-1200001	3.00
19.) Motor mount	BI-1200002	15.00
20.) Screw (yellow Zink) (M2.5x6.0mm)(roundhead w/lock washer)	IA-0000001	0.15
21.) Screw (4/40x4.0mm)(roundhead)	IA-0000021	0.15
22.) Wire strap (black)(metal)	IH-0000013	1.00
23.) Wire nut (yellow)	BI-4500003	0.25
24.) Screw (6/32x6.0mm)(roundhead)	IA-0000027	0.15
25.) PCB (printed circuit board) (4 pin female plug)(horizontal mount)	AG-0000043	8.00
26.) Switch (small)	BB-0000009	5.00
27.) Chassis (black) (stamped metal)	DF-1200029	*15.00
28.) Screw (6/32x8.0mm)(roundhead)	IA-0000050	0.15
29.) Pilot (black) (complete w/ handrails)	DG-1230014	40.00
30.) Lens (headlight)(clear)	FA-1230026	2.00
31.) Headlight housing (black)	FB-1200195	10.00
32.) Grommet (black)(rubber)	IH-0000010	0.50
33.) Wire strap (black)	IH-0000012	1.00
34.) Bulb (clear)(18v) (grain of wheat)(245.0mm long wires)(white plug)	CA-0000039	2.00

*Requires Exchange
All parts are priced as each



USRA 2-8-8-2 Steam Engine (top section)

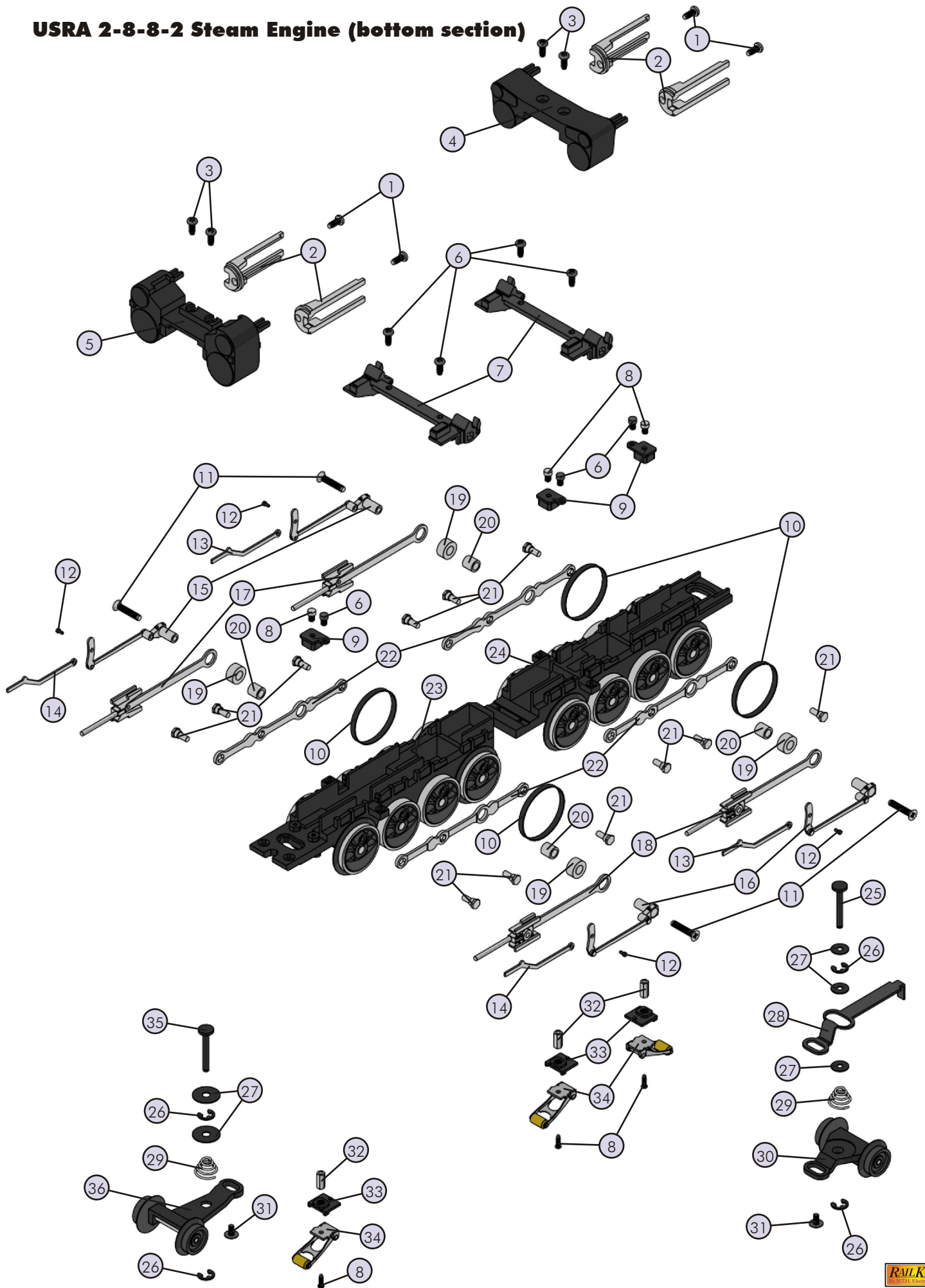
USRA 2-8-8-2 Steam Engine (bottom section)

Engine Parts

Name and Number	Part #	\$Price Per Unit	Name and Number	Part #	\$Price Per Unit
1.) Screw (nickel) (6/32x8.0mm)(roundhead)	IA-0000163	0.15	34.) Pick-up (8.0x11.0mm roller)(24.0mm long)	BD-0000050	5.00
2.) Drive rod guide (nickel) (40.5mm long)	EA-1200014	4.00	35.) Pin (black) (4.8x19.6mm)(8.0x1.2mm flathead) (2 e-clip grooves)(0.8mm & 12.3mm out from end)	IG-0000035	1.00
3.) Screw (4/40x8.0mm)(roundhead)	IA-0000011	0.15	36.) Truck (black) (lead)(1 axle)	DA-1230024	10.00
4.) Steam chest (black)(rear)	EF-1240001	15.00			
5.) Steam chest (black)(front)	EF-1230015	15.00			
6.) Screw (4/40x6.0mm)(roundhead)	IA-0000003	0.15			
7.) Motion hanger (black)	EA-1200015	10.00			
8.) Screw (nickel) (M3x6.0mm)(roundhead)	IA-0000015	0.15			
9.) Insulator (black) (top)(square)(pick-up)	BD-0000009	2.00			
10.) Traction tire	DE-0000023	0.75			
11.) Screw (nickel) (M3x16.0mm)(flathead)	IA-0000052	0.15			
12.) Screw (M2x9.0mm)(roundhead)(w/ 2.0x5.5mm shank)	IA-0000280	0.15			
13.) Eccentric rod (nickel) (rear)(45.2mm long)(small step)	ED-1240002	1.00			
14.) Eccentric rod (nickel) (front)(45.3mm long)(large step)	ED-1230002	1.00			
15.) Eccentric assembly (nickel) (right)(37.9mm long rod)	ED-1210025	5.00			
16.) Eccentric assembly (nickel) (left)(37.9mm long rod)	ED-1220025	5.00			
17.) Drive rod (nickel) (right)(89.0mm long)	EC-1210021	6.00			
18.) Drive rod (nickel) (left)(89.0mm long)	EC-1220021	6.00			
19.) Sleeve (nickel) (outer)(6.7x10.0x3.0mm)	ID-1250007	1.00			
20.) Sleeve (nickel) (inner)(5.5x6.5x6.3mm)	ID-1250008	1.00			
21.) Bolt (nickel) (M3x9.5mm)(hex head)(4.0x2.0mm shank)	IA-0000313	1.00			
22.) Side rod (nickel) (93.5mm long)(4 bolt holes)	EC-1250025	4.00			
23.) Drive block (black) (front)(4 axle)	DF-1230003	*50.00			
24.) Drive block (black) (rear)(4 axle)	DF-1240003	*50.00			
25.) Pin (black) (4.8x19.6mm)(8.0x1.2mm flathead) (2 e-clip grooves)(0.8mm & 13.5mm out from end)	IG-0000034	1.00			
26.) E-clip (3.5x9.0x0.6mm)	IF-0000009	0.15			
27.) Washer (5.0x12.0x0.6mm)(metal)	ID-0000053	0.15			
28.) Draw bar (black) (64.5mm long)(9.0mm high step)(2 loop holes)	FB-1200196	3.00			
29.) Spring (conical)(nickel) (6.5x12.5x13.0mm)(0.6mm thick wire)	IE-0000062	0.50			
30.) Truck (black) (trailing)(1 axle)	DA-1240034	10.00			
31.) Screw (6/32x6.0mm)(washer head)	IA-0000214	0.15			
32.) Nut (nickel) (2.5x5.0x10.0mm)	IC-0000001	0.50			
33.) Insulator (black) (pick-up)(bottom)(plastic)	BD-0000001	2.00			

*Requires Exchange
All parts are priced as each

USRA 2-8-8-2 Steam Engine (bottom section)



USRA 2-8-8-2 Steam Engine Tender

Tender Parts

Name and Number	Part #	\$Price Per Unit	Name and Number	Part #	\$Price Per Unit
1.) Lens (clear) (back-up light)	FA-0000073	2.00	33.) Spring (6.5x14.0mm)(w/ 0.5mm thick wire)	IE-0000022	0.50
2.) Shell (Pennsylvania) (Brunswick green & Tuscan red w/ gold letters)	GA-1200072	*85.00	34.) Washer (4.5x10.0x0.6mm)	ID-0000041	0.15
2.) Shell (Northern Pacific) (black w/ white letters)	GA-1200073	*85.00	35.) E-clip (3.0x8.0x0.5mm)	IF-0000002	0.15
3.) Handrail (nickel) (41.0mm long)(1.0mm thick wire)	GA-1200074	1.00	Whistle Only Parts		
4.) Screw (M3x4.0mm)(roundhead)	IA-0000010	0.15	16.) Whistle board	AF-4500005	29.95
5.) Bracket (speaker)(black) (rounded corners)(9.2x10.0mm)(3.0mm high)	IH-0000129	1.00	17.) DCRU board (w/ red, black & green plugs)	AC-0000008	39.95
6.) Speaker (Star, PR-05004-08)(8 ohms)(0.2 watt)	BF-4500008	8.95	18.) Wire harness (tender) (190.0mm long wires)(1 red & 1 black plug) (w/ 70.0mm long extra black wire w/ eyelet)	BC-0000070	8.00
7.) Bracket (battery)(black) (plastic)(horizontal side mount)	IH-0000116	3.00	20.) Screw (4/40x18.0mm)(roundhead)	IA-0000094	0.15
8.) Battery	BG-4000001	9.95	24.) Bracket (black)(plastic) (DCRU mounting bracket) (multiple side mount bracket)(u-shaped)	IH-0000119	2.00
9.) Battery leads (145.0mm long wires)	BC-0000003	5.00	25.) Screw (DCRU bracket) (M3x4.0mm)(roundhead)	IA-0000010	0.15
10.) Volume pot (BK10 SW) (100.0mm long wires)	BI-0000044	5.00	33.) Spring (6.5x11.0mm)(w/ 0.4mm thick wire)	IE-0000007	0.50
11.) Bracket (volume pot) (black)(plastic)(u-shaped)	IH-0000023	2.00	34.) Washer (plastic) (cup shaped for spring to fit in) (4.6x8.6x2.0mm)(inside 7.0x1.0mm)	ID-0000060	0.15
12.) Washer (7.0x12.0x0.5mm)	ID-0000034	0.15	NS.) Coupler (51.5mm long)	DD-0000039	3.00
13.) Screw (M3x8.0mm)(roundhead)(self-drilling)	IA-0000072	0.15	NS.) Armature (45.0mm long)	DD-0000040	1.00
14.) Nut (6.0x10.0x2.0mm)	IC-0000007	0.50	NS.) Switch (small)	BB-0000009	5.00
15.) Proto-Sound Chip®	N/A	19.95	NS.) Screw (for switch) (M2x4.0mm)(roundhead)	IA-0000058	0.15
16.) Proto-Sound® board (top)	AE-4500001	*100.00	*Requires Exchange All parts are priced as each		
17.) Proto-Sound® board (bottom)	AD-4500001	*60.00			
18.) Wire harness (tender) (175.0mm long)(50.0mm long black wire w/ eyelet) (yellow, black, red & white plugs)	BC-0000087	8.00			
19.) Heat sink (Aluminum) (3.0x20.0x10.0mm)	AI-4500010	2.00			
20.) Screw (4/40x30.0mm)(roundhead)	IA-0000191	0.15			
21.) Screw (4/40x6.0mm)(roundhead)	IA-0000003	0.15			
22.) Insulator washer (white) (6.0x4.0x2.5mm)(plastic)	ID-0000033	0.15			
23.) Insulator (clear) (13.0x19.0x0.1mm)(single hole)	ID-0000024	0.15			
24.) Bracket (brass) (Proto-Sound® board mounting)	IH-0000072	2.00			
25.) Screw (4/40x4.0mm)(roundhead)	IA-0000021	0.15			
26.) Chassis (black)(tender)	GB-1200040	*15.00			
27.) Screw (6/32x8.0mm)(roundhead)	IA-0000050	0.15			
28.) Draw bar (black) (58.5mm long)	GA-1200075	2.00			
29.) Screw (6/32x6.0mm)(washer head)	IA-0000039	0.15			
30.) Truck (black) (2 axle)(tender)	DA-1230016	25.00			
31.) T-bar	IG-0000001	0.50			
32.) Proto-Coupler® (51.5mm long)	DD-0000001	10.00			

USRA 2-8-8-2 Steam Engine Tender

