

RAILKING[®]
By M.T.H. Electric Trains

30-1176-1
30-1176-0

2-10-0 Decapod Steam Engine



GL100401

DCS
PRO SOUND
DIGITAL CONTROL SYSTEM

2-10-0 Decapod Steam Engine

Boiler Parts

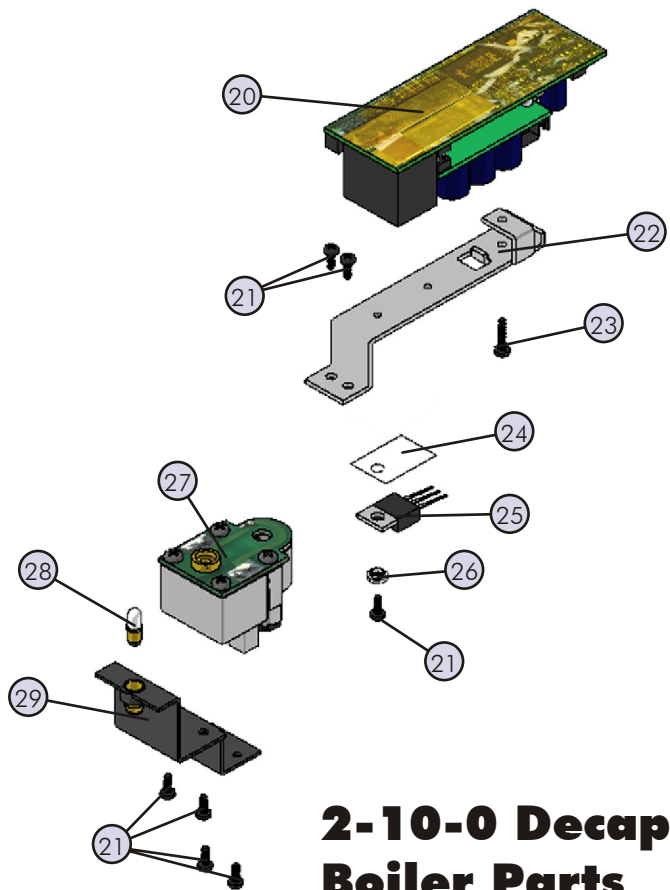
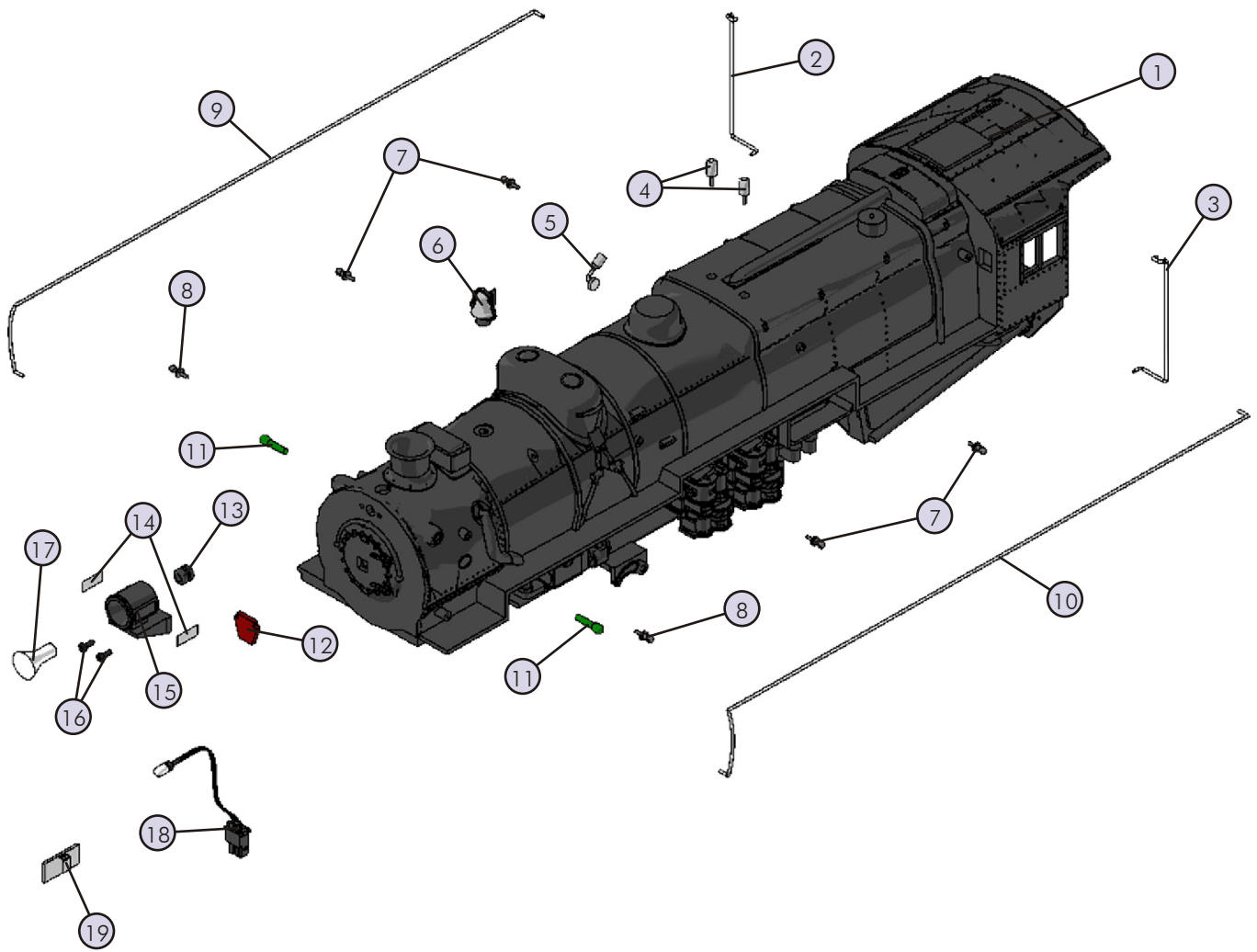
| Name and Number | Part # | \$Price Per Unit |
|--|------------|---------------------|
| 1.) Shell (green, red, graphite) (boiler)(PRR)(# 4248) | FB-1200271 | *150.00 |
| 2.) Handrail (nickel) (right)(cab)(26.5mm long) | FB-1210050 | 2.00 |
| 3.) Handrail (nickel) (left)(cab)(26.5mm long) | FB-1220057 | 2.00 |
| 4.) Pop-off valve (nickel) (6.3mm long) | FB-1200224 | 3.00 |
| 5.) Whistle (nickel) | FB-1200003 | 4.00 |
| 6.) Bell (nickel bell, green bracket) | FB-1200225 | 10.00 |
| 7.) Stanchion (black) (4.0mm long)(plastic) | FB-1200215 | 0.50 |
| 8.) Stanchion (black) (4.0mm long)(plastic) | FB-1200215 | 0.50 |
| 9.) Handrail (nickel) (right)(boiler)(202.0mm long) | FB-1210051 | 2.00 |
| 10.) Handrail (nickel) (left)(boiler)(202.0mm long) | FB-1220058 | 2.00 |
| 11.) Lens (green)(marker) (2.2x14.2mm)(1.0x2.8mm rounded lens head) | FA-0000081 | 1.00 |
| 12.) Number plate (# 4248) (green & gold)(round)(PRR)(# 4248) | FB-1200272 | 6.00 |
| 13.) Grommet (black) (4.5x5.0mm)(rubber) | IH-0000010 | 0.50 |
| 14.) Number board (# 4248) (black w/ white numbers)(sticker)(PRR)(# 4248) | FG-1200009 | 0.50 |
| 15.) Headlight housing (green) | FB-1230001 | 12.00 |
| 16.) Screw (M2x4.0mm)(roundhead) | IA-0000058 | 0.15 |
| 17.) Lens (clear)(headlight) | FA-1230004 | 2.00 |
| 18.) Bulb (clear)(6v)(1) (120.0mm long w/ blue male 2 pin plug) | CA-0000042 | 3.00 |
| 19.) Wire strap (white) | IH-0000103 | 1.00 |
| 20.) Boards (Proto-Sound® 2.0) | AE-0000001 | *200.00 |
| 21.) Screw (4/40x6.0mm)(roundhead) | IA-0000003 | 0.15 |
| 22.) Bracket (Aluminum) (15.0x78.0mm)(16.5mm step) (for Proto-Sound® 2.0 boards) | IH-0000188 | 3.00 |
| 23.) Screw (6/32x14.0mm)(roundhead) | IA-0000194 | 0.15 |
| 24.) Insulator (clear) (13.0x19.0x0.1mm)(single hole) | ID-0000024 | 0.15 |
| 25.) Voltage regulator (LM2937ET) | AG-0000032 | 3.00 |
| 26.) Insulator (white) (washer)(3.0x6.0x3.0mm)(plastic) | ID-0000025 | 0.15 |
| 27.) Smoke unit (Proto-Sound® 2.0) (6.8x8.0x2.1x3.9mm brass cup)(7.5mm long posts) | AA-0000034 | 50.00 |
| 28.) Bulb (clear) (6v)(small globe)(screw base) | CA-0000038 | 1.00 |
| 29.) Bracket (black) (25.0x45.0mm)(headlight/smoke unit) | IH-0000189 | 3.00 |
| NS.) Wire harness (black male 12 pin plug) | BC-1200134 | 15.00 |
| NS.) Wire harness (black male 8 pin plug) | BC-1200135 | 3.00 |
| NS.) Wire harness (black male 7 pin plug) | BC-1200053 | 10.00 |
| NS.) Wire harness (black male 5 pin plug) | BC-1200136 | 5.00 |
| NS.) Wire harness (black male 4 pin plug) | BC-1200137 | 4.00 |

| Name and Number | Part # | \$Price Per Unit |
|---|------------|---------------------|
| NS.) Wire harness (yellow male 2 pin plug) | BC-1200138 | 3.00 |

Loco-Sound® Only Parts

| | | |
|--|------------|---------|
| 20.) Boards (Loco-Sound®) | AE-0000003 | *100.00 |
| 21.) Screw (4/40x6.0mm)(roundhead) | IA-0000003 | 0.15 |
| 22.) Bracket (Aluminum) (for Loco-Sound® boards) | IH-0000190 | 3.00 |
| 23.) Screw (4/40x8.0mm)(roundhead) | IA-0000011 | 0.15 |
| 24.) Insulator (clear) (13.0x19.0x0.1mm)(single hole) | ID-0000024 | 0.15 |
| 26.) Insulator (white) (washer)(3.0x6.0x3.0mm)(plastic) | ID-0000025 | 0.15 |
| NS.) Wire harness (black male 12 pin plug) | BC-1200139 | 15.00 |
| NS.) Wire harness (black male 7 pin plug) | BC-1200053 | 10.00 |
| NS.) Wire harness (black male 5 pin plug) | BC-1200136 | 5.00 |
| NS.) Wire harness (black male 4 pin plug) | BC-1200137 | 4.00 |
| NS.) Ferrite bead (gray) (4.6x9.7x9.4mm)(barrel shape) | AI-0000030 | 2.00 |
| NS.) Capacitor (.01 micro uF)(blue w/ 2 wires) | AI-0000031 | 2.00 |
| NS.) Inline Ferrite bead (gray) | AI-0000033 | 2.00 |

*Requires Exchange
All parts are priced as each



2-10-0 Decapod Steam Engine Boiler Parts

2-10-0 Decapod Steam Engine

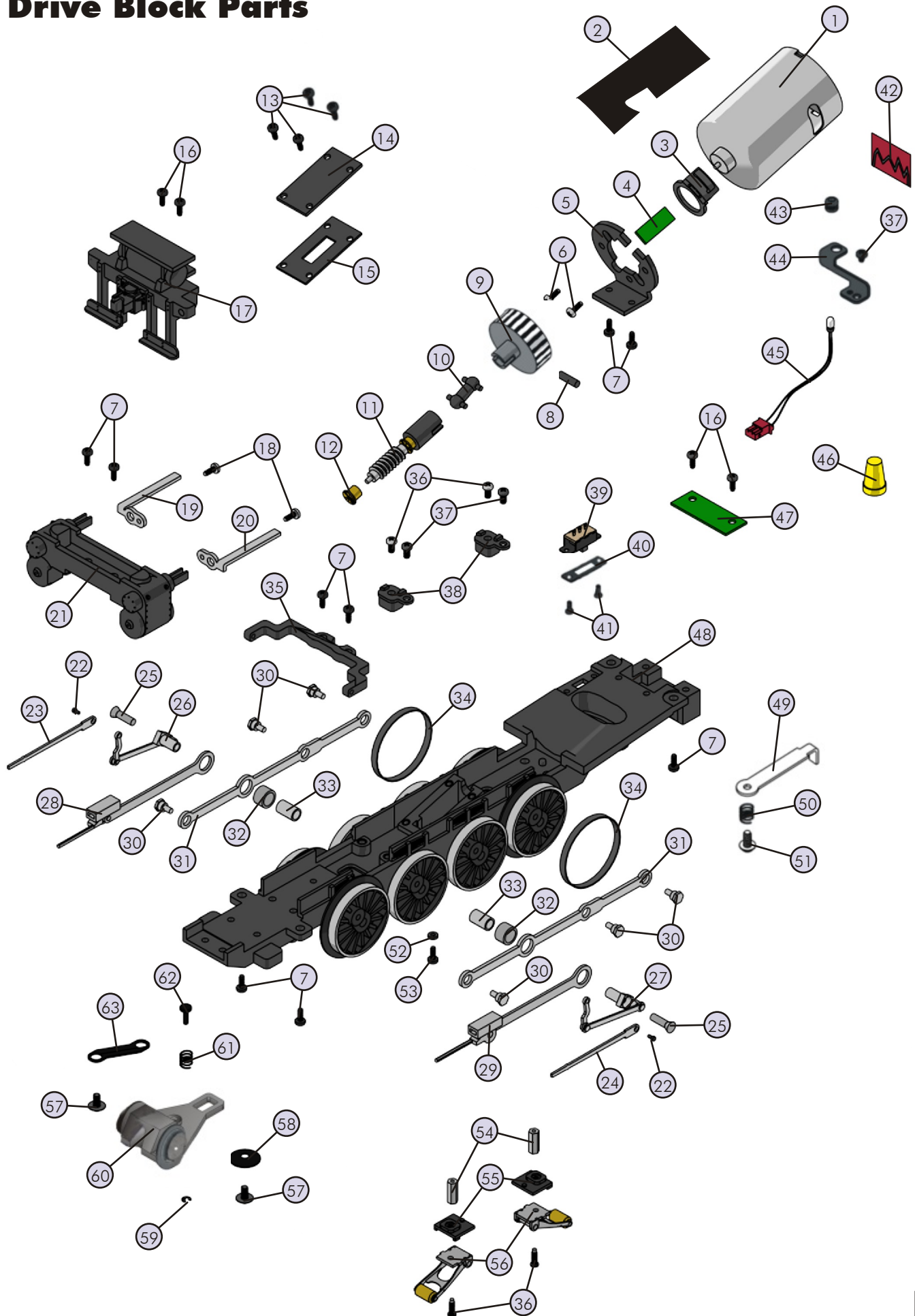
Drive Block Parts

| Name and Number | Part # | \$Price Per Unit | Name and Number | Part # | \$Price Per Unit |
|---|------------|---------------------|---|------------|---------------------|
| 1.) Motor (RS-545RH)(no worm gear) | BE-0000087 | 25.00 | 33.) Sleeve (nickel) (inner)(5.3x6.5x7.8mm) | ID-0000058 | 1.00 |
| 2.) Bracket (black)(wire support) (stamped metal)(23.0x57.0mm)(1.0mm thick) (notched on one side)(slightly rounded) | IH-0000283 | 3.00 | 34.) Traction tire (black) | DE-0000023 | 0.75 |
| 3.) Bracket (black)(plastic) (for tach board mounting)(fits on part # BI-0000052) | IH-0000192 | 3.00 | 35.) Motion hanger (black)(die-cast) | EA-1200019 | 8.00 |
| 4.) Tach board (w/ 1.5mm spacer between board & optical sensor) | AG-0000047 | 6.00 | 36.) Screw (nickel) (M3x6.0mm)(roundhead) | IA-0000015 | 0.15 |
| 5.) Motor mount (black) (for motor RS-545RH)(stamped metal) | BI-0000052 | 6.00 | 37.) Screw (4/40x6.0mm)(roundhead) | IA-0000003 | 0.15 |
| 6.) Screw (M3x6.0mm)(roundhead) | IA-0000016 | 0.15 | 38.) Insulator (black) (top)(square)(pick-up) | BD-0000026 | 2.00 |
| 7.) Screw (6/32x8.0mm)(roundhead) | IA-0000050 | 0.15 | 39.) Switch (small) | BB-0000009 | 5.00 |
| 8.) Set screw (M3x10.0mm)(no screw head) | IA-0000151 | 0.15 | 40.) Plate (black w/ gold letters) (8.0x20.6mm)(0.4mm thick)(smoke unit off/on) | IH-0000284 | 3.00 |
| 9.) Flywheel (white w/black stripes) (10.0x30.0mm)(w/ socket for drive shaft) | BE-0000086 | 5.00 | 41.) Screw (M2x4.0mm)(roundhead) | IA-0000058 | 0.15 |
| 10.) Drive shaft (black) (plastic)(15.6mm long)(dog bone) | EH-1200002 | 2.00 | 42.) Lens (red)(firebox glow) | FA-0000077 | 2.00 |
| 11.) Worm gear (42.0mm long) | EH-1200006 | 5.00 | 43.) Grommet (black) (4.5x5.0mm)(rubber) | IH-0000010 | 0.50 |
| 12.) Bearing (brass) (2.9x5.3x4.6mm) | DC-0000006 | 3.00 | 44.) Bracket (black)(metal) (7.1x23.0x14.5mm)(9.0mm step)(firebox glow) | IH-0000285 | 3.00 |
| 13.) Screw (4/40x8.0mm)(roundhead) | IA-0000011 | 0.15 | 45.) Bulb (clear)(6v) (50.0mm long wires w/ red male 2 pin plug) (grain of wheat)(firebox glow) | CG-0000030 | 3.00 |
| 14.) Gear box cover (black) (19.4x34.4x1.0mm)(metal) | BI-0000050 | 2.00 | 46.) Wire nut (yellow) | BI-4500003 | 0.25 |
| 15.) Gasket (black)(fiber) (for gear box cover)(19.3x33.9x1.5mm) | BI-0000051 | 1.00 | 47.) PC board (green) (w/ 10 pin female plug) | AG-0000039 | 8.00 |
| 16.) Screw (6/32x6.0mm)(roundhead) | IA-0000027 | 0.15 | 48.) Drive block (black)(5 axle) (PRR)(# 4248) | DF-1200043 | *100.00 |
| 17.) Pilot (green)(PRR)(# 4248) | DG-1230018 | 25.00 | 49.) Draw bar (black) (metal)(10.9x59.7mm long)(1.3mm thick) | FB-1200273 | 3.00 |
| 18.) Screw (nickel) (6/32x6.0mm)(roundhead) | IA-0000051 | 0.15 | 50.) Spring (nickel) (6.4x10.0mm)(w/ 0.5mm thick wire) | IE-0000070 | 0.50 |
| 19.) Drive rod guide (nickel) (right)(33.0mm long) | EA-1210010 | 3.00 | 51.) Bolt (black)(6/32x14.0mm) (1.5x8.0mm slotted head)(5.0x6.5mm shank) | IA-0000336 | 1.00 |
| 20.) Drive rod guide (nickel) (left)(33.0mm long) | EA-1220010 | 3.00 | 52.) Washer (black) (3.0x6.0x0.4mm)(fiber) | ID-0000040 | 0.15 |
| 21.) Steam chest (green) | EF-1230018 | 15.00 | 53.) Screw (6/32x4.0mm)(roundhead) | IA-0000060 | 0.15 |
| 22.) Screw (M2x9.0mm)(roundhead)(w/ 2.0x6.0mm shank) | IA-0000280 | 0.15 | 54.) Nut (nickel)(2.5x5.0x10.0mm) | IC-0000005 | 0.50 |
| 23.) Eccentric rod (nickel) (right)(40.2mm long)(4.0mm step) | ED-1210030 | 1.00 | 55.) Insulator (black) (pick-up)(bottom)(plastic) | BD-0000001 | 2.00 |
| 24.) Eccentric rod (nickel) (left)(40.2mm long)(4.0mm step) | ED-1220030 | 1.00 | 56.) Pick-up (8.0x11.0mm roller)(24.0mm long) | BD-0000013 | 5.00 |
| 25.) Screw (nickel) (M3x16.0mm)(flathead) | IA-0000052 | 0.15 | 57.) Screw (4/40x6.0mm)(washer head) | IA-0000028 | 0.15 |
| 26.) Eccentric assembly (nickel) (right)(51.0mm long rod)(rod has a 3.0mm step) | ED-1210031 | 5.00 | 58.) Spacer (black) (3.5x15.0x2.5mm)(metal)(cupped) | ID-0000014 | 1.00 |
| 27.) Eccentric assembly (nickel) (left)(51.0mm long rod)(rod has a 3.0mm step) | ED-1220031 | 5.00 | 59.) E-clip (2.5x6.0x0.5mm) | IF-0000004 | 0.15 |
| 28.) Drive rod (nickel) (right)(95.0mm long) | EC-1210024 | 5.00 | 60.) Truck (black) (lead)(single axle)(die-cast) | DA-1230033 | 15.00 |
| 29.) Drive rod (nickel) (left)(95.0mm long) | EC-1220024 | 5.00 | 61.) Spring (nickel) (6.4x10.0mm)(w/ 0.5mm thick wire) | IE-0000071 | 0.50 |
| 30.) Bolt (nickel)(M3x9.4mm) (4.0x2.5mm shank)(5.0mm hex head) | IA-0000054 | 1.00 | 62.) Pin (black) (3.0x13.5mm)(1.2x6.0mm rounded head) (1 e-clip groove 0.5mm out from end) | IG-0000047 | 1.00 |
| 31.) Side rod (nickel) (135.4mm long)(5 mounting holes) | EC-1250032 | 3.00 | 63.) Bracket (black)(lead truck) (7.0x32.0mm)(1.0mm thick)(5.0mm step) | IH-1230011 | 1.00 |
| 32.) Sleeve (nickel) (outer)(6.8x10.0x4.4mm) | ID-0000059 | 1.00 | | | |

*Requires Exchange
All parts are priced as each



2-10-0 Decapod Steam Engine Drive Block Parts



2-10-0 Decapod Steam Engine

Tender Parts

| Name and Number | Part # | \$Price Per Unit |
|---|------------|---------------------|
| 1.) Handrail (nickel)(41.4mm long) | GA-1200085 | 1.00 |
| 2.) Lens (clear)(back-up light) (1.8x3.2x6.0mm)(3.8x0.5mm lens head) | FA-0000078 | 2.00 |
| 3.) Lens (red)(marker light) (1.8x3.2x6.0mm)(3.8x0.5mm lens head) | FA-0000082 | 2.00 |
| 4.) Dog house (green) | GA-1200086 | *15.00 |
| 5.) Screw (6/32x6.0mm)(roundhead) | IA-0000027 | 0.15 |
| 6.) Shell (green, red, black) (tender)(Pennsylvania) | GA-1200087 | *100.00 |
| 7.) Handrail (nickel)(43.8mm long) | GA-1200088 | 1.00 |
| 8.) Wire harness (10 pin male plug) | BC-1200140 | 15.00 |
| 9.) Screw (6/32x6.0mm)(washer head) | IA-0000214 | 0.15 |
| 10.) Gasket (black) (43.8x49.8x3.0mm)(foam) | IB-0000009 | 0.50 |
| 11.) Speaker (Star) (FR-05004-B0422)(16 ohms)(MAX 0.5 watt)(004E) | BF-0000027 | 8.95 |
| 12.) Speaker cone (black)(plastic) (41.5x54.5x6.5mm)(3 mounting tabs)(cut out in center) | BF-0000017 | 3.00 |
| 13.) Spacer (black) (3.0x6.0x4.3mm)(plastic) | ID-0000071 | 0.15 |
| 14.) Volume pot (small) (blue w/ green board) | BI-0000040 | 5.00 |
| 15.) Screw (M3x8.0mm)(roundhead) | IA-0000035 | 0.15 |
| 16.) Screw (M3x10.0mm)(roundhead) | IA-0000110 | 0.15 |
| 17.) Battery leads (100.0mm long wires w/ male 2 pin plug) | BC-0000088 | 5.00 |
| 18.) Bracket (black) (metal)(for back-up light) | IH-0000194 | 2.00 |
| 19.) Grommet (black) (4.5x5.0mm)(rubber) | IH-0000010 | 0.50 |
| 20.) Bulb (clear)(6v)(back-up light) (90.0mm long wires w/ green plug)(grain of wheat) | CF-0000012 | 2.00 |
| 21.) Bracket (battery) | IH-0000042 | 3.00 |
| 22.) Screw (M3x4.0mm)(roundhead) | IA-0000010 | 0.15 |
| 23.) Battery | BG-4000001 | 10.00 |
| 24.) Chassis (black)(tender) | GB-1200045 | *15.00 |
| 25.) Screw (6/32x8.0mm)(roundhead) | IA-0000050 | 0.15 |
| 26.) T-bar (black)(plastic) | IG-0000001 | 0.50 |
| 27.) Proto-Coupler® (Proto-Sound® 2.0)(44.5mm long) | DD-0000033 | 10.00 |
| 28.) Spring (nickel) (6.5x14.0mm)(0.5mm thick wire) | IE-0000022 | 0.50 |
| 29.) Washer (4.5x10.0x6.0mm) | ID-0000009 | 0.15 |
| 30.) E-clip (3.0x8.0x0.5mm) | IF-0000001 | 0.15 |
| 31.) Truck (black)(3 axle)(tender) | DA-1200014 | 30.00 |
| 32.) Screw (4/40x6.0mm)(washer head) | IA-0000028 | 0.15 |
| 33.) Draw bar (black) (12.0x49.5mm)(10.0mm step up)(1.2mm thick) | GA-1200112 | 3.00 |
| NS.) Wire harness (175.0mm long wires w/ black male 2 pin plug) (w/ protective wire shield) | BC-0000114 | 2.00 |
| NS.) Axle bushing (black) (plastic)(tender truck)(3 axle) | DC-1200001 | 3.00 |

| Name and Number | Part # | \$Price Per Unit |
|-----------------|--------|---------------------|
|-----------------|--------|---------------------|

Loco-Sound® Parts

| | | |
|--|------------|-------|
| 8.) Wire harness (10 pin male plug) | BC-1200141 | 12.00 |
| 11.) Speaker (Star) (FR-05004-A0422)(8 ohms)(MAX 0.5 watt)(004E) | BF-0000028 | 8.95 |
| 28.) Spring (6.5x11.0mm)(0.5mm thick wire) | IE-0000063 | 0.50 |
| 29.) Washer (black)(plastic) (4.6x8.5x0.5mm)(cup shaped for spring) | ID-0000060 | 0.15 |
| NS.) Coupler (mechanical)(44.5mm long) | DD-0000043 | 3.00 |
| NS.) Armature (37.8mm long) | DD-0000044 | 1.00 |

*Requires Exchange
All parts are priced as each

2-10-0 Decapod Steam Engine Tender Parts

