

NW-2

Switcher



NW-2 w/ Proto-sound or **Horn Only**

Parts

Name and Number	Part#	\$Price Per Unit
1.) Shell(U.P.,#D.S.1050)	FC-2200023	*65.00
1.) Shell(C&N.W.,#1017)	FC-2200024	*65.00
2.) Horn(U.P.Gray)	FC-2200025	3.00
2.) Horn(C&N.W.Green)	FC-2200026	3.00
3.) Bell(U.P.Gray)	FC-2200027	3.00
3.) Bell(C&N.W.Green)	FC-2200028	3.00
4.) Handrail	FC-2250002	3.00
(black)(left&rightsides)		
5.) Headlightlens	FA-2230012	2.00
6.) Handrail(black)(front&back)	FC-2250003	5.00
7.) Rearlightlens	FA-2240001	2.00
8.) Screw	IA-0000031	.15
(M3x12.0mm)(washerhead)(selfdrilling)		
9.) Windows(rear&leftside)	FA-2200003	2.00
10.) Windows(front&rightside)	FA-2200004	2.00
11.) Board(proto-sound)(top)	AE-4500001	*100.00
12.) Proto-soundchip	N/A	19.95
13.) Board(proto-sound)(bottom)	AD-4500001	*60.00
14.) Screw	IA-0000021	.15
(4-40x4.0mm)(roundhead)		
15.) Wireshield(right)	FI-0000005	2.00
16.) Wireshield(left)	FI-0000006	2.00
17.) Rubberband	BI-4500004	.50
18.) Motor	BE-0000019	25.00
(RS-365SH,7.8x17.0mmwormgear)		
19.) Bracket(volumepot)	IH-0000038	2.00
20.) Volumepot(B10K,1.2T)	BI-4500009	5.00
21.) Screw	IA-0000016	.15
(M3x6.0mm)(roundhead)		
22.) Screw	IA-0000021	.15
(4-40x4.0mm)(roundhead)		
23.) Screw	IA-0000012	.15
(M3 x 14.0mm)(roundheadw/lockwasher)		
24.) Screw	IA-0000001	.15
(M2.5x6.0mm)(roundheadw/lockwasher)(yellowzinc)		
25.) Motormount	BI-0000005	15.00
26.) Switch(large)	BB-0000010	5.00
27.) Screw	IA-0000007	.15
(M2x4.0mm)(panhead)		
28.) Screw	IA-0000011	.15
(4-40x8.0mm)(roundhead)		
29.) Bracket(proto-sound)	IH-0000037	2.00
30.) Insulator	ID-0000026	2.00
31.) Insulator	ID-0000033	.15
32.) Screw	IA-0000003	.15
(4-40x6.0mm)(roundhead)		
33.) Heatsink	AI-0000011	2.00
(3.0x20.0x9.0mm)(cutinhalf,14.0mm)		
34.) Screw	IA-0000049	.15
(4-40x30.0mm)(roundhead)		
35.) Bulb	CG-0000002	.95
(18v,smallglobe,bayonetbase)		
36.) Screw	IA-0000022	.15
(M2.5x3.0mm)(roundhead)		
37.) Socket	CH-0000005	3.00
38.) Chassis	DH-2200010	*15.00
39.) Truckside(silver)	DB-2060001	7.00
39.) Truckside(black)	DB-2060002	7.00
40.) Battery	BG-4000001	9.95
41.) Speaker	BF-4500012	8.95
(Unison,U4408B01,8Ω,0.3w)		
42.) Screw	IA-0000016	.15
(M3x6.0mm)(roundhead)		

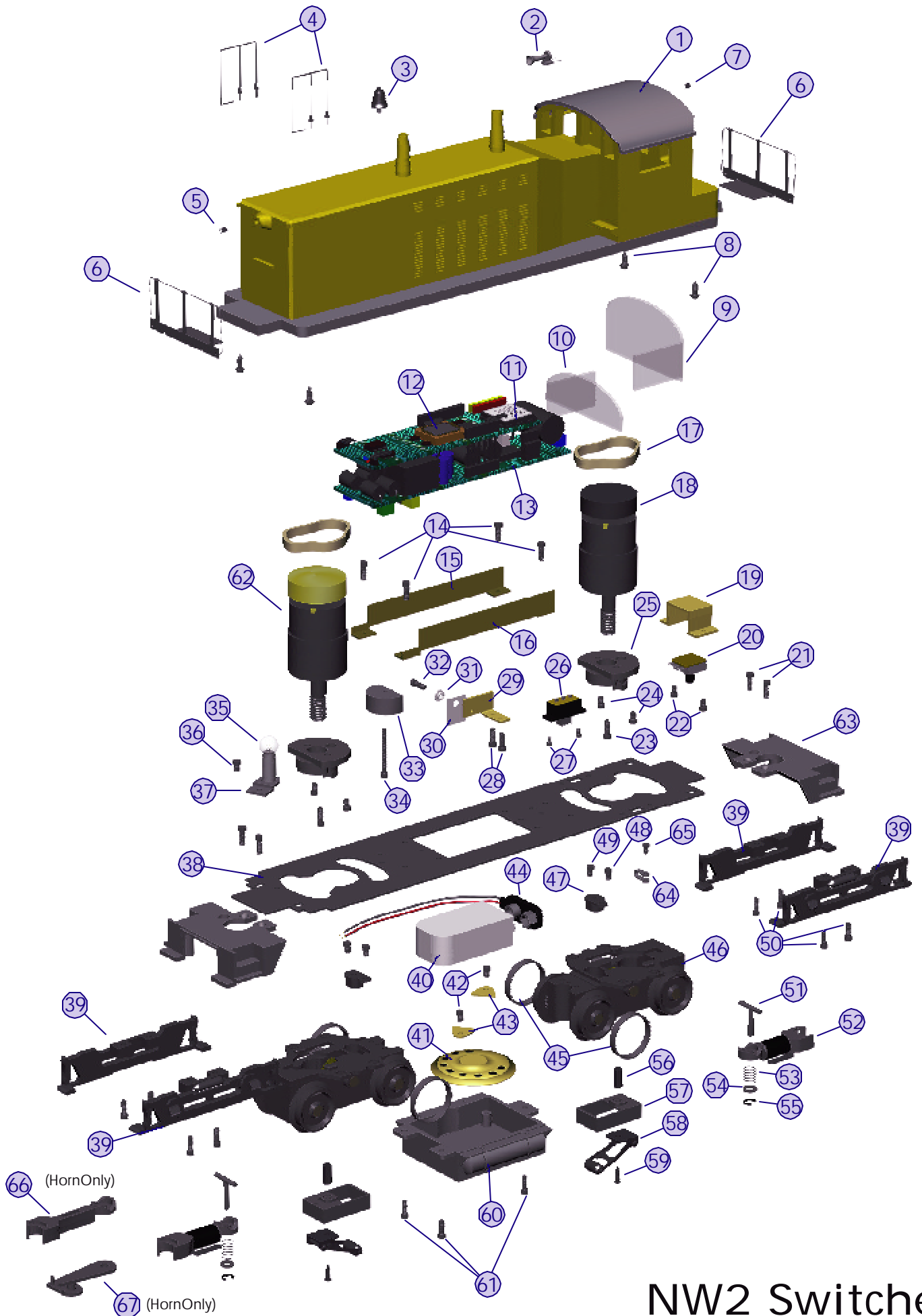
Parts

Name and Number	Part#	\$Price Per Unit
43.) Bracket	IH-0000036	1.00
(speaker)(12.0x12.0mm)		
44.) Batteryleads	BC-0000003	5.00
45.) Tractiontires	DE-0000018	.75
46.) Truckblock(2axle)	DA-2050005	*30.00
47.) Insulator(pickup)(top)(square)	BD-0000035	1.00
48.) Screw	IA-0000003	.15
(4-40x6.0mm)(roundhead)		
49.) Screw	IA-0000035	.15
(M3x8.0mm)(roundhead)		
50.) Screw	IA-0000016	.15
(M3x6.0mm)(roundhead)		
51.) T-bar	IG-0000001	.50
52.) Proto-coupler(44.0mmlong)	DD-0000004	10.00
53.) Spring	IE-0000017	.50
54.) Washer	ID-0000026	.15
55.) E-clip	IF-0000002	.15
56.) Nut	IC-0000005	.50
(2.5x5.0x10.0mm)		
57.) Insulator(pickup)(bottom)(rect.)	BD-0000039	2.00
58.) Pick-up	BD-0000038	5.00
(8.0mmroller,29.0mmlong)		
59.) Screw	IA-0000035	.15
(M3x8.0mm)(roundhead)		
60.) Fueltank(U.P.Gray)	FC-2200029	*10.00
60.) Fueltank(Black)	FC-2200030	*10.00
61.) Screw	IA-0000016	.15
(M3x6.0mm)(roundhead)		
62.) Motor	BE-0000028	25.00
(RS-365SH,7.8x17.0mmwormgear)(27.6x4.6mmflywheel)		
63.) Pilot(U.P.Gray)	DG-2250007	*15.00
63.) Pilot(C&N.W.Green)	DG-2250008	*15.00
64.) Wirestrap(metal)	IH-0000012	1.00
65.) Screw	IA-0000016	.15
(M3x6.0mm)(roundhead)		

Horn Only Parts

11.) Board(horn)	AF-4500004	29.95
13.) Board(DCRU)	AC-0000001	39.95
28.) Screw	IA-0000010	.15
(M3 x 4.0mm)(roundhead)(DCRUbracketmountingscrew)		
29.) Bracket	IH-0000039	2.00
(DCRU)(U-shaped)(plastic)(39.0x27.0x10.0mm)		
34.) Screw	IA-0000026	.15
(4-40x18.0mm)(roundhead)(DCRUmountingscrew)		
66.) Coupler(44.0mmlong)	DD-0000003	3.00
67.) Couplerarmature	DD-0000022	1.00
(37.6mm long)		

*RequiresExchange



NW2 Switcher