



20-3020-1

J-1e Hudson Steam Engine



GL073002



J-1e Hudson Steam Engine

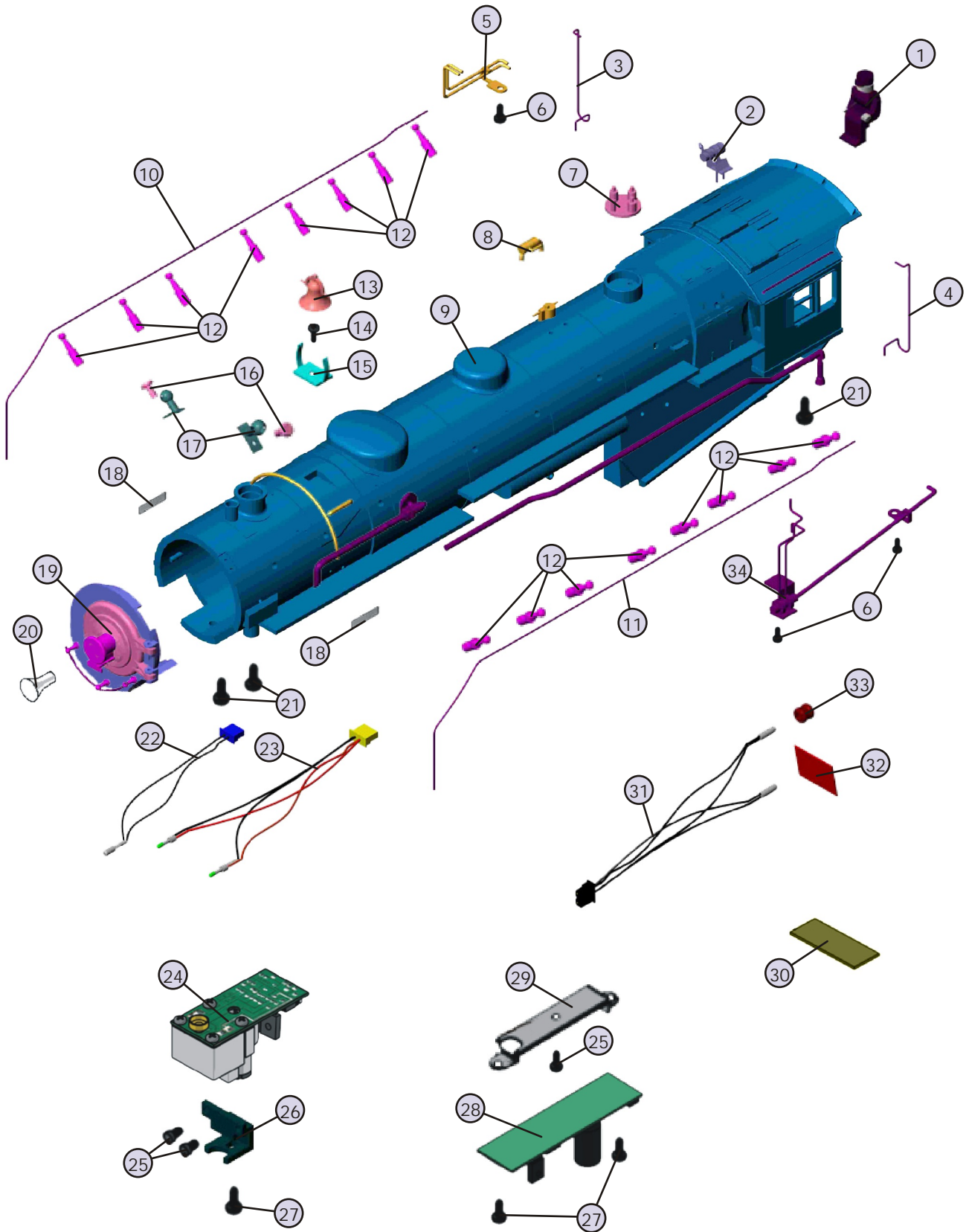
Boiler Parts

Name and Number	Part #	\$Price Per Unit	Name and Number	Part #	\$Price Per Unit
1.) Engineer (blue) (side mounting)	FI-0000046	5.00	31.) Bulbs (red & clear)(6v)(2) (150.0mm long wires w/ black male 2 pin plug) (grain of wheat)	CG-0000012	4.00
2.) Steam generator (black) (brass)(w/ tabs used for mounting)	FB-1100241	8.00	Bulbs (clear)(6v)(2)	CC-0000058	4.00
3.) Handrail (black) (right)(51.0mm long)(cab rear)	FB-1100242	3.00	(150.0mm long wires w/ white male 2 pin plug) (grain of wheat)(optional)		
4.) Handrail (black) (left)(51.0mm long)(cab rear)	FB-1100243	3.00	32.) Lens (red w/ flames) (firebox glow)	FA-0000077	2.00
5.) Water pipe (black) (mounts under engineer side of cab)	FB-1100244	8.00	33.) Grommet (black) (4.5x5.0mm)(rubber)	IH-0000010	0.15
6.) Screw (4/40x4.0mm)(roundhead)	IA-0000021	0.15	34.) Feed water pump (black) (complete w/ piping)(NYC)(# 5344)	FB-1100255	14.00
7.) Pop-off valves (black, brass) (4 brass valves mounted on black base)	FB-1100245	10.00			
8.) Whistle (black, brass)	FB-1100246	6.00			
9.) Shell (black) (boiler)(NYC)(# 5344)	FB-1100247	*160.00			
10.) Handrail (nickel)(right)(boiler)	FB-1100248	4.00			
11.) Handrail (nickel)(left)(boiler)	FB-1100249	4.00			
12.) Stanchion (black) (5.0mm long)(for boiler handrails)	FB-1100250	2.00			
13.) Bell (brass, black)(w/ hanger)	FB-1100251	6.00			
14.) Screw (M2.5x5.0mm)(roundhead)	IA-0000044	0.15			
15.) Bracket (black)(supports bell)	IH-1100001	3.00			
16.) Screw (M2x4.0mm)(roundhead)	IA-0000058	0.15			
17.) Marker light housing (black)	FB-1100252	6.00			
18.) Builder's plate (brass, black) (4.0x7.5mm)(American Locomotive Company) (November 1931)	FB-1100253	3.00			
19.) Boiler front (black) (complete)(NYC)(# 5344)	FB-1100254	*25.00			
20.) Lens (clear)(headlight) (3.2x5.5x9.0mm)(4.5x7.5mm tapered lens head)	FA-1130005	3.00			
21.) Screw (6/32x8.0mm)(roundhead)	IA-0000050	0.15			
22.) Bulb (clear)(6v)(1) (200.00mm long wires w/ black male 2 pin plug) (grain of wheat)	CA-0000050	3.00			
23.) L.E.D.s (red)(6v)(2) (150.0mm long wires w/ yellow male 2 pin plug)	CE-0000012	5.00			
L.E.D.s (green)(6v)(2) (150.0mm long wires w/ yellow male 2 pin plug) (optional, not on original production)	CE-0000020	5.00			
24.) Smoke unit (Proto-Sound®)(6.0x7.0x9.5mm black stack) (7.5mm long mounting posts) (holes tapped in both sides & bottom of mounting posts)	AA-0000062	50.00			
25.) Screw (4/40x6.0mm)(roundhead)	IA-0000003	0.15			
26.) Bracket (black) (die-cast)(mounts smoke unit to boiler shell)	IH-0000065	3.00			
27.) Screw (4/40x8.0mm)(roundhead)	IA-0000011	0.15			
28.) CV board (green) (23.0x85.0mm board)(2 white female 2 pin plugs) (1 red female 2 pin plug)	AG-0000072	20.00			
29.) Bracket (nickel) (CV board)(10.0x57.0mm)(2-7.5mm steps) (hole in center to mount bracket to boiler shell)	IH-0000373	3.00			
30.) Contact spring board (frosted) (11.8x34.3mm)(0.4mm thick)(2 copper contact pads)	BH-0000072	2.00			

*Requires Exchange
All parts are priced as each



J-1e Hudson Steam Engine Boiler Parts



J-1e Hudson Steam Engine

Drive Block Parts

Name and Number	Part #	\$Price Per Unit	Name and Number	Part #	\$Price Per Unit
1.) Motor (Pittman)(# 9434J434)(12VDC)	BE-0000030	50.00	33.) Screw (M2x10.0mm)(roundhead)(1.8x7.0mm shank)	IA-0000369	0.15
2.) Motor mount (black) (metal)(for Pittman motors)	BI-0000049	10.00	34.) Bolt (nickel) (M2.5x13.0mm)(hex head)	IA-0000312	1.00
3.) Set screw (black) (M3x12.0mm)(no screw head)	IA-0000150	0.15	35.) Eccentric assembly (nickel) (right)(43.5mm long flat arm)	ED-1110015	5.00
4.) Screw (6/32x10.0mm)(roundhead)	IA-0000040	0.15	36.) Eccentric assembly (nickel) (left)(43.5mm long flat arm)	ED-1120016	5.00
5.) Screw (8/32x8.0mm)(roundhead)	IA-0000195	0.15	37.) Drive rod (nickel) (right)(107.3mm long end to end)(complete)	EC-1110012	10.00
6.) Flywheel (black) (13.0x30.0mm)(w/ holder for drive shaft)	BE-0000070	5.00	38.) Drive rod (nickel) (left)(107.3mm long end to end)(complete)	EC-1120012	10.00
7.) Drive shaft (black) (34.7mm long)(dog bone)	EH-0000004	3.00	39.) Bolt (nickel) (M2.5x7.0mm)(hex head)	IA-0000311	1.00
8.) Worm gear (52.6mm long)	EH-0000010	10.00	40.) Sleeve (nickel) (outer)(6.7x10.0x3.2mm)	ID-0000093	1.00
9.) Bearing (nickel) (4.0x9.0x4.0mm)	DC-0000001	5.00	41.) Sleeve (nickel) (inner)(5.6x6.4x6.3mm)	ID-0000045	1.00
10.) Screw (4/40x8.0mm)(roundhead)	IA-0000011	0.15	42.) Side rod (nickel)(right) (97.3mm long)(3 mounting holes)(tabs point up)	EC-1110013	4.00
11.) Gear box cover (black) (19.3x36.3x1.0mm)(metal)	BI-0000022	2.00	43.) Side rod (nickel)(left) (97.3mm long)(3 mounting holes)(tabs point up)	EC-1120013	4.00
12.) Gasket (black) (19.2x36.0x1.6mm)(fiber)	BI-0000023	1.00	44.) Screw (6/32x12.0mm)(roundhead)	IA-0000062	0.15
13.) Wire nut (yellow)	BI-4500003	0.25	45.) Steam chest (black)	EF-1130004	25.00
14.) Screw (6/32x6.0mm)(roundhead)	IA-0000027	0.15	46.) Compressor (black)	FB-1100141	12.00
15.) PC board (green) (13.9x31.8mm)(w/ black female 4 pin plug) (w/ 2 contact springs)(horizontal mount)	AG-0000073	8.00	47.) Pilot (black)(complete)	FB-1130027	25.00
16.) Pin (black) (4.9x20.0mm)(1.4x9.0mm flathead) (e-clip groove is 0.8mm out from end)	IG-0000050	0.50	48.) Coupler (black)(scale) (19.0mm long)(2 mounting tabs)(non-operating)	DD-0000061	6.00
17.) Drive block (black)(3 axle)	DF-1100007	*75.00	49.) Bracket (black) (mounts scale coupler to bottom of pilot)(stamped metal)	IH-0000376	1.00
18.) Traction tire (black) (3.5x31.0mm)(rubber)	DE-0000031	0.75	50.) Check valve (black) (w/ mounting bracket)	FB-1100256	8.00
19.) Screw (M2x4.0mm)(roundhead)	IA-0000058	0.15	51.) Pin (black) (5.0x16.0mm)(1.5x7.0mm tapered head) (e-clip groove 0.5mm out from end)	IG-0000008	0.50
20.) Switch (large)(2 position)	BB-0000006	5.00	52.) Bracket (black) (lead truck)(8.0x49.5mm long)(6.5mm step)	IH-0000377	1.00
21.) Screw (black) (M3x6.0mm)(roundhead)	IA-0000016	0.15	53.) Spring (nickel) (7.0x12.0mm)(w/ 0.5mm thick wire)	IE-0000060	0.50
22.) Screw (4/40x6.0mm)(roundhead)	IA-0000003	0.15	54.) Screw (4/40x6.0mm)(washer head)	IA-0000028	0.15
23.) Insulator (black) (top)(square)(pick-up)	BD-0000009	2.00	55.) Truck (black)(lead) (engine)(2 axle)(complete)(53.5mm wheel base)	DA-1130016	25.00
24.) Screw (nickel) (6/32x6.0mm)(roundhead)	IA-0000051	0.15	56.) E-clip (black)(3.5x9.0x0.6mm)	IF-0000009	0.15
25.) Drive rod guide (nickel, black) (right)(w/ black step)	EA-1110009	4.00	57.) Bolt (black) (6/32x14.0mm)(1.5x12.0mm slotted head) (5.0x6.0mm shank)	IA-0000240	1.00
26.) Drive rod guide (nickel, black) (left)(w/ black step)	EA-1120010	4.00	58.) Brake shoe assembly (black)(right front)(25.8mm long)	FB-1100143	3.00
27.) Eccentric rod guide (black) (right)(has large box on top)	ED-1110014	4.00	59.) Brake shoe assembly (black)(left front)(25.8mm long)	FB-1100144	3.00
28.) Eccentric rod guide (black) (left)	ED-1120015	3.00	60.) Brake shoe assembly (black)(right middle)(25.8mm long)	FB-1100145	3.00
29.) Screw (6/32x8.0mm)(roundhead)	IA-0000050	0.15	61.) Brake shoe assembly (black)(left middle)(25.8mm long)	FB-1100146	3.00
30.) Motion hanger (black) (die-cast)(complete)	EA-1100005	15.00	62.) Brake shoe assembly (black)(right rear)(16.5mm long)	FB-1100147	3.00
31.) Screw (nickel) (M2x4.5mm)(roundhead)(1.9x3.0mm shank)	IA-0000367	0.15	63.) Brake shoe assembly (black)(left rear)(16.5mm long)	FB-1100148	3.00
32.) Screw (M2x8.0mm)(roundhead)(1.8x4.5mm shank)	IA-0000368	0.15			

*Requires Exchange
All parts are priced as each



J-1e Hudson Steam Engine

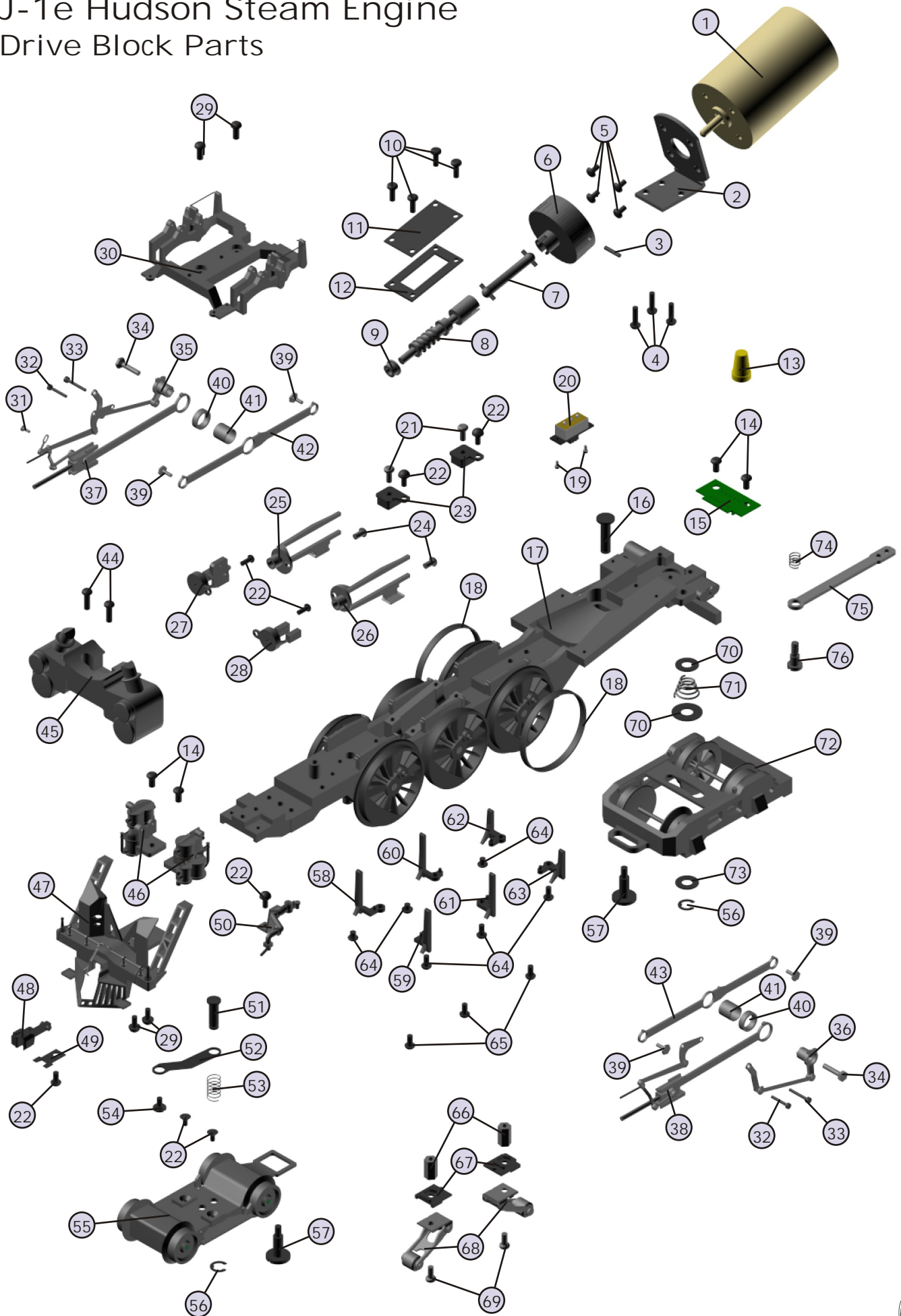
Drive Block Parts

Name and Number	Part #	\$Price Per Unit
64.) Screw (M2.5x8.0mm)(roundhead)	IA-0000184	0.15
65.) Screw (4/40x4.0mm)(roundhead)	IA-0000021	0.15
66.) Nut (nickel) (2.5x5.0x10.0mm)	IC-0000001	0.50
67.) Insulator (black) (pick-up)(bottom)(square)	BD-0000024	2.00
68.) Pick-up (8.0x11.0mm roller w/ tapered ends)(28.0mm long)	BD-0000043	5.00
69.) Screw (nickel) (M3x6.0mm)(roundhead)	IA-0000015	0.15
70.) Washer (black) (5.0x15.0x0.5mm)	ID-0000013	0.15
71.) Spring (nickel) (7.5x13.0x14.0mm)(w/ 0.7mm thick wire)	IE-0000018	0.50
72.) Truck (black) (trailing)(2 axle)(engine)(w/ journal boxes)	DA-1140016	30.00
73.) Washer (black) (5.0x12.0x0.6mm)	ID-0000053	0.15
74.) Spring (nickel) (6.5x11.0mm)(w/ 0.4mm thick wire)	IE-0000007	0.50
75.) Draw bar (black) (68.0mm long)(3 mounting holes)	FB-1100107	3.00
76.) Bolt (black) (8/32x14.0mm)(1.5x8.0mm slotted head) (5.0x6.0mm shank)	IA-0000105	1.00

*Requires Exchange
All parts are priced as each



J-1e Hudson Steam Engine Drive Block Parts



J-1e Hudson Steam Engine

Tender Parts

Name and Number	Part #	\$Price Per Unit	Name and Number	Part #	\$Price Per Unit
1.) Ladder (black)(tender)(rear)	GA-1100068	8.00	31.) Screw (4/40x6.0mm)(roundhead)	IA-0000003	0.15
2.) Screw (M2x4.0mm)(roundhead)	IA-0000058	0.15	32.) Battery (white) (8.4 volts)(re-chargable)(nickel-cadium)	BG-4000001	10.00
3.) Marker light housing (black) (tender)(rear)	GA-1100069	6.00	33.) Battery leads (145.0mm long wires w/ white male 2 pin plug)	BC-4000009	3.00
4.) Lens (clear) (2.0x3.0x5.8mm)(0.5x3.8mm lens head) (ribbed for press fit)(reverse light)	FA-1140006	2.00	34.) Foam pad (black) (20.0x20.0x7.5mm)	II-0000012	0.50
5.) Handrail (black) (41.5mm long)(tender)(front & rear)	GA-1100070	2.00	35.) Bracket (black) (speaker)(9.0x9.5mm)(0.7mm thick)(3.0mm step)	IH-0000271	1.00
6.) Ladder (black) (7.0x15.0mm)(tender)(rear sides)	GA-1100071	3.00	36.) Speaker (Star)(FR-05004-A0422)(8 ohms)(MAX 0.5 watt) (50.0mm speaker)	BF-0000028	8.95
7.) Screw (4/40x4.0mm)(roundhead)	IA-0000021	0.15	37.) L.E.D.s (red)(6v)(2) (275.0mm long wires w/ black male 2 pin plug)	CE-0000010	5.00
8.) Shell (black) (tender)(New York Central)(NYC)(# 5344)	GA-1100072	*100.00	38.) T-bar (black) (4.0x20.0mm)(plastic)	IG-0000001	0.50
9.) Handrail (black) (21.0mm long)(tender)(front)	GA-1100073	2.00	39.) Proto-Coupler® (Proto-Sound®)(51.5mm long)	DD-0000001	10.00
10.) Volume pot (B10K)(SW) (140.0mm long wires w/ flat black 3 pin plug)	BI-0000020	5.00	40.) Spacer (black) (4.5x13.0x3.3mm)(plastic)	ID-0000067	0.15
11.) Bracket (black) (volume pot)(plastic)(u-shaped)	IH-0000023	2.00	41.) Spring (nickel) (6.5x11.0mm)(w/ 0.4mm thick wire)	IE-0000007	0.50
12.) Washer (black) (7.0x12.0x0.5mm)	ID-0000034	0.15	42.) Washer (black) (4.5x10.0x0.5mm)(metal)	ID-0000009	0.15
13.) Nut (nickel) (6.0x10.0x2.0mm)	IC-0000007	0.50	43.) E-clip (black) (3.0x8.0x0.5mm)(metal)	IF-0000002	0.15
14.) Screw (M3x8.0mm)(roundhead)(plastic cutting threads)	IA-0000204	0.15	44.) Truck (black)(tender) (3 axle)(trailing)(truck sides have journal boxes) (stamped truck frame w/ coupler mount)	DA-1100005	30.00
15.) Wire harness (black) (tender)(320.0mm long wires w/ extra wire & eyelet) (w/ black male angled 4 pin plug)	BC-0000099	8.00	45.) Truck (black) (3 axle)(leading)(tender)(stamped truck frame) (truck sides have journal boxes)	DA-1100006	30.00
16.) Front steps (black) (die-cast)(tender)	GA-1100074	15.00	46.) Bolt (black) (8/32x19.0mm)(2.0x8.0mm slotted head) (w/ 5.0x11.0mm oversized shank)	IA-0000066	1.00
17.) Screw (6/32x8.0mm)(roundhead)	IA-0000050	0.15	47.) Spring (nickel) (8.0x15.0mm)(w/ 0.6mm thick wire)	IE-0000025	0.50
18.) Chassis (black) (60.0x228.0mm)(w/ bolsters for mounting trucks)	GB-1100013	*15.00	48.) Water scoop (black)	GA-1100041	10.00
19.) Chip (Proto-Sound®)(4 meg) Sound set	AI-0000037	20.00	49.) Brake cylinder (black)	GA-1100040	10.00
20.) Board (Proto-Sound®)(top)	AE-203020-1	N/A			
21.) Board (Proto-Sound®) (bottom)	AE-4500001	*100.00			
22.) Screw (4/40x6.0mm)(roundhead)	AD-4500001	*60.00			
23.) Screw (4/40x20.0mm)(roundhead)	IA-0000003	0.15			
24.) Bracket (Aluminum) (for mounting Proto-Sound® boards)	IA-0000112	0.15			
25.) Insulator (clear) (13.0x19.0x0.1mm)(single hole)	IH-0000374	6.00			
26.) Insulator washer (white) (6.0x4.0x2.5mm)(plastic)	ID-0000024	0.15			
27.) Bulb (clear)(1.5v)(1) (240.0mm long wires w/ black male 2 pin plug) (grain of wheat)	ID-0000033	0.15			
28.) Grommet (black) (4.5x5.0mm)(rubber)	CF-0000009	3.00			
29.) Bracket (brass) (9.0x21.0x6.5mm)(for mounting reverse light)	IH-0000010	0.15			
30.) Lock washer (black) (3.5x6.3x0.9mm)	IH-0000375	2.00			
	ID-0000101	0.15			

*Requires Exchange
All parts are priced as each



J-1e Hudson Steam Engine Tender Parts

