



# E-8 ABA Diesel Engines

20-2303-1  
20-2304-1  
20-2305-1  
20-2317-1  
20-2318-1



GL012202

REV. GL012402



# E-8 A Unit ( lead ) Diesel Engine

## Engine Parts

NameandNumber	Part #	\$Price PerUnit	NameandNumber	Part #	\$Price PerUnit
1.) Diaphragm(black) (3rib)(26.0x50.0x10.0mm)(notchedtopcorners) (2centermountingplugs)	FI-000017	2.00	8.) Winterizationhatch(darkgray) (NYC)(#4066)(#4095)(#4100)	FC-2100993	6.00
2.) Shell(ACL)(#545)(#548) (purple,black,silver)	FC-2100975	*120.00	Winterizationhatch(darkblue) (RF&P)(#1001)(#1051)(#1005)	FC-2100994	6.00
Shell(gray,orange,black) (MilwaukeeRoad)(#37A)(#37C)	FC-2100976	*120.00	9.) Fan(gray) (10blades)(small)(12.8mmindiameter)	FC-2100407	2.00
Shell(orange,green,yellow) (GN)(#525)	FC-2100977	*120.00	10.) Fan(gray) (10blades)(large)(19.8mmindiameter)	FC-2100408	2.00
Shell(darkgray,lightgray) (NYC)(#4066)	FC-2100978	*120.00	11.) Fan shroud(black) (large)(ACL)(#545)(#548)(#504-B)	FC-2100409	6.00
Shell(blue,gray,gold) (RF&P)(#1001)	FC-2100979	*120.00	(MilwaukeeRoad)(#37A)(#37C)(#37B)	FC-2100995	6.00
3.) Liftring(black) (ACL)(#545)(#548)(#504-B)	FC-2100387	0.50	Fan shroud(darkgreen) (large)(GN)(#525)(#527)(#525B)	FC-2100996	6.00
(MilwaukeeRoad)(#37A)(#37C)(#37B)			Fan shroud(darkgray) (large)(NYC)(#4066)(#4095)(#4100)	FC-2100997	6.00
Liftring(darkgreen) (GN)(#525)(#527)(#525B)	FC-2160009	0.50	Fan shroud(darkblue) (large)(RF&P)(#1001)(#1051)(#1005)	FC-2100997	6.00
Liftring(darkgray) (NYC)(#4066)(#4095)(#4100)	FC-2100320	0.50	12.) Fan shroud(black) (small)(ACL)(#545)(#548)(#504-B)	FC-2100413	5.00
Liftring(darkblue) (RF&P)(#1001)(#1051)(#1005)	FC-2100980	0.50	(MilwaukeeRoad)(#37A)(#37C)(#37B)	FC-2100998	5.00
4.) Handrail(purple) (18.0mmlong)(rear)	FC-2100981	1.00	Fan shroud(darkgreen) (small)(GN)(#525)(#527)(#525B)	FC-2100999	5.00
(ACL)(#545)(#548)(#504-B)			Fan shroud(darkgray) (small)(NYC)(#4066)(#4095)(#4100)	FC-2100999	5.00
Handrail(gray) (18.0mmlong)(rear)	FC-2100982	1.00	Fan shroud(darkblue) (small)(RF&P)(#1001)(#1051)(#1005)	FC-2101000	5.00
(MilwaukeeRoad)(#37A)(#37C)(#37B)			13.) Vent ( nickel) (right)(11.0x343.0mm)(ACL)(#545)(#548)	FC-2101001	9.00
Handrail(darkgreen) (18.0mmlong)(rear)	FC-2100983	1.00	(MilwaukeeRoad)(#37A)(#37C)	FC-2101002	9.00
(GN)(#525)(#527)(#525B)			(RF&P)(#1001)(#1051)	FC-2101003	9.00
Handrail(darkgray) (18.0mmlong)(rear)	FC-2100984	1.00	Vent ( darkgreen) (right)(11.0x343.0mm)(GN)(#525)(#527)	FC-2101004	9.00
(NYC)(#4066)(#4095)(#4100)			Vent ( darkgray) (right)(11.0x343.0mm)(NYC)(#4066)(#4095)	FC-2101004	9.00
Handrail(darkblue) (18.0mm long)(rear)	FC-2100985	1.00	14.) Vent ( nickel) (left)(11.0x343.0mm)(ACL)(#545)(#548)	FC-2101005	9.00
(RF&P)(#1001)(#1051)(#1005)			(MilwaukeeRoad)(#37A)(#37C)	FC-2101006	9.00
5.) Piping(black)(left) (w/stanchions)(ACL)(#545)(#548)(#504-B)	FC-2100395	4.00	(RF&P)(#1001)(#1051)	FC-2101005	9.00
(MilwaukeeRoad)(#37A)(#37C)(#37B)			Vent ( darkgreen) (left)(11.0x343.0mm)(GN)(#525)(#527)	FC-2101006	9.00
Piping(darkgreen)(left) (w/stanchions)(GN)(#525)(#527)(#525B)	FC-2100986	4.00	Vent ( darkgray) (left)(11.0x343.0mm)(NYC)(#4066)(#4095)	FC-2101007	6.00
Piping(darkgray)(left) (w/stanchions)(NYC)(#4066)(#4095)(#4100)	FC-2100987	4.00	15.) Door(purple,silver,yellow) (rightmiddle)(ACL)(#545)(#548)(#504-B)	FC-2101008	6.00
Piping(darkblue)(left) (w/stanchions)(RF&P)(#1001)(#1051)(#1005)	FC-2100988	4.00	Door(gray,orange,yellow) (rightmiddle)	FC-2101009	6.00
6.) Piping(black)(right) (w/stanchions)(ACL)(#545)(#548)(#504-B)	FC-2100399	4.00	(MilwaukeeRoad)(#37A)(#37C)(#37B)	FC-2101009	6.00
(MilwaukeeRoad)(#37A)(#37C)(#37B)			Door (darkgreen,orange,yellow)(rightmiddle)	FC-2101010	6.00
Piping(darkgreen)( right) (w/stanchions)(GN)(#525)(#527)(#525B)	FC-2100989	4.00	(GN)(#525)(#527)(#525B)	FC-2101011	6.00
Piping(darkgray)(right) (w/stanchions)(NYC)(#4066)(#4095)(#4100)	FC-2100990	4.00	Door(darkblue,gray,yellow) (rightmiddle)(RF&P)(#1001)(#1051)(#1005)	FC-2101012	6.00
Piping(darkblue)(right) (w/stanchions)(RF&P)(#1001)(#1051)(#1005)	FC-2100991	4.00	16.) Door(purple,silver,yellow) (leftmiddle)(ACL)(#545)(#548)(#504-B)	FC-2101013	6.00
7.) Pin(black)(1.0x4.5mm) (0.8x3.5mmflathead)(1.5x1.5mmshank)	FC-2100528	1.00	Door(gray,orange,yellow) (leftmiddle)	FC-2101013	6.00
(pinonendhasribsforpressfit)(forfan)			(MilwaukeeRoad)(#37A)(#37C)(#37B)		
8.) Winterizationhatch(black) (ACL)(#545)(#548)(#504-B)	FC-2100403	6.00			
(MilwaukeeRoad)(#37A)(#37C)(#37B)					
Winterizationhatch(darkgreen) (GN)(#525)(#527)(#525B)	FC-2100992	6.00			

\*RequiresExchange  
Allpartsarepricedaseach



# E-8 A Unit ( lead ) Diesel Engine

## Engine Parts

NameandNumber	Part #	\$Price PerUnit	NameandNumber	Part #	\$Price PerUnit
16.) Door (darkgreen,orange,yellow)(leftmiddle) (GN)(#525)(#527)(#525B)	FC-2101014	6.00	24.) Door (darkgreen,orange,yellow)(leftfront) (GN)(#525)(#527)	FC-2101038	6.00
Door (darkgray,lightgray,yellow)(leftmiddle) (NYC)(#4066)(#4095)(#4100)	FC-2101015	6.00	Door (darkgray,lightgray,yellow)(leftfront) (NYC)(#4066)(#4095)	FC-2101039	6.00
Door(darkblue,gray,yellow) (leftmiddle)(RF&P)(#1001)(#1051)(#1005)	FC-2101016	6.00	Door(darkblue,gray,yellow) (leftfront)(RF&P)(#1001)(#1051)	FC-2101040	6.00
17.) Pin(nickel) (21.3mmlong)(doorhinge)	FC-2100365	0.25	25.) Windowlens(clear) (7.3x8.7x2.5mm)(door)	FA-0000067	1.00
18.) Hinge(gray)(door)(plastic)	FC-2100364	1.00	26.) Builder's plate(brass,black) (EMD)(oval)	FC-2100453	3.00
19.) Handrail(purple) (34.0mmlong)(middle) (ACL)(#545)(#548)(#504-B)	FC-2101017	1.00	27.) Handrail(purple) (45.5mmlong)(ACL)(#545)(#548)	FC-2101041	1.00
Handrail(gray) (34.0mmlong)(middle) (MilwaukeeRoad)(#37A)(#37C)(#37B)	FC-2101018	1.00	Handrail(gray) (45.5mmlong)(MilwaukeeRoad)(#37A)(#37C)	FC-2101042	1.00
Handrail(darkgreen) (34.0mmlong)(middle) (GN)(#525)(#527)(#525B)	FC-2101019	1.00	Handrail(green) (45.5mmlong)(GN)(#525)(#527)	FC-2101043	1.00
Handrail(darkgray) (34.0mmlong)(middle) (NYC)(#4066)(#4095)(#4100)	FC-2101020	1.00	Handrail(darkgray) (45.5mmlong)(NYC)(#4066)(#4095)	FC-2101044	1.00
Handrail(darkblue) (34.0mmlong)(middle) (RF&P)(#1001)(#1051)(#1005)	FC-2101021	1.00	Handrail(darkblue) (45.5mmlong)(RF&P)(#1001)(#1051)	FC-2101045	1.00
20.) Lens(clear) (portal)(2.7x10.0mm)	FA-0000066	2.00	28.) Windshieldwipers(black)(plastic)	FC-2100458	1.00
21.) Airhorns(black) (3chimes)(ACL)(#545)(#548) (MilwaukeeRoad)(#37A)(#37C)	FC-2101022	3.00	29.) Numberboardhousing (silver)(ACL)(#545)(#548)	FC-2101046	4.00
Airhorns(darkgreen) (3chimes)(GN)(#525)(#527)	FC-2101023	3.00	Numberboardhousing (orange)(MilwaukeeRoad)(#37A)(#37C)	FC-2101047	4.00
Airhorns(darkgray) (3chimes)(NYC)(#4066)(#4095)	FC-2101024	3.00	Numberboardhousing (orange)(GN)(#525)(#527)	FC-2101048	4.00
Airhorns (blue) (3chimes)(RF&P)(#1001)(#1051)	FC-2101025	3.00	Numberboardhousing (darkgray)(NYC)(#4066)(#4095)	FC-2101049	4.00
22.) Handrail(purple) (23.0mmlong)(ACL)(#545)(#548)	FC-2101026	1.00	Numberboardhousing (gray)(RF&P)(#1001)(#1051)	FC-2101050	4.00
Handrail(gray) (23.0mmlong)(MilwaukeeRoad)(#37A)(#37C)	FC-2101027	1.00	30.) Numberboard (blackw/whitenumbers)(ACL)(#545)	FG-2100284	2.00
Handrail(darkgreen) (23.0mmlong)(GN)(#525)(#527)	FC-2101028	1.00	Numberboard (blackw/whitenumbers)(MilwaukeeRoad)(#37A)	FG-2100285	2.00
Handrail(darkgray) (23.0mmlong)(NYC)(#4066)(#4095)	FC-2101029	1.00	Numberboard (blackw/whitenumbers)(GN)(#525)	FG-2100286	2.00
Handrail(blue) (23.0mmlong)(RF&P)(#1001)(#1051)	FC-2101030	1.00	Numberboard (blackw/whitenumbers)(NYC)(#4066)	FG-2100287	2.00
23.) Door(purple,silver,yellow) (rightfront)(ACL)(#545)(#548)	FC-2101031	6.00	Numberboard (blackw/whitenumbers)(RF&P)(#1001)	FG-2100288	2.00
Door(gray)(rightfront) (MilwaukeeRoad)(#37A)(#37C)	FC-2101032	6.00	31.) Lens(clear) (8.5mm)(marslight/headlight) (ACL)(#545)(#548)(GN)(#525)(#527)	FA-0000068	2.00
Door (darkgreen,orange,yellow)(rightfront) (GN)(#525)(#527)	FC-2101033	6.00	(MilwaukeeRoad)(#37A)(#37C) (NYC)(#4066)(#4095)(RF&P)(#1001)(#1051)		
Door (darkgray,lightgray,yellow)(rightfront) (NYC)(#4066)(#4095)	FC-2101034	6.00	32.) Lens(clear) (8.0x7.0x6.0mm)(headlight) (ACL)(#545)(#548)(GN)(#525)(#527)		
Door(darkblue,gray,yellow) (rightfront)(RF&P)(#1001)(#1051)	FC-2101035	6.00	(MilwaukeeRoad)(#37A)(#37C)		
24.) Door(purple,silver,yellow) (leftfront)(ACL)(#545)(#548)	FC-2101036	6.00	33.) Handrail(purple) (12.5mmlong)(ACL)(#545)(#548)	FC-2101051	1.00
Door(gray)(leftfront) (MilwaukeeRoad)(#37A)(#37C)	FC-2101037	6.00	Handrail(maroon) (12.5mmlong)(MilwaukeeRoad)(#37A)(#37C)	FC-2101052	1.00
			Handrail(darkgreen) (12.5mmlong)(GN)(#525)(#527)	FC-2101053	1.00
			Handrail(darkgray) (12.5mmlong)(NYC)(#4066)(#4095)	FC-2101054	1.00

\*RequiresExchange  
Allpartsarepricedaseach



# E-8 A Unit ( lead ) Diesel Engine

## Engine Parts

NameandNumber	Part #	\$Price PerUnit	NameandNumber	Part #	\$Price PerUnit
33.) Handrail(darkblue) (12.5mm long)(RF&P)(#1001)(#1051)	FC-2101055	1.00	61.) Motor(RS-385PH) (8.0x24.0mm worm gear w/16.0mm long threads) (9.0x30.0mm black flywheel w/white stripes) ( has tachboard mount)	BE-0000066	25.00
34.) Windshield(clear)	FA-0000069	6.00	62.) Rubberband	BI-4500004	0.50
35.) Spring(nickel) (door)(spring is slightly bent)	IE-0000055	1.00	63.) Wireclip(white) (plastic)(4.0x9.0x3.5mm)	IH-0000313	1.00
36.) L.E.D.s(green)(6v)(2) (275.0mm long wires w/yellow male 2pin plug)	CE-0000009	5.00	64.) Smokeunit (Proto-Sound® 2.0)(20.5mm high smoke stack) (26.3mm long mounting posts)	AA-0000026	50.00
37.) Contact spring base (black)(plastic)(for 1 male 2pin plug)	BH-0000001	2.00	65.) Screw (4/40x6.0mm)(round head)	IA-0000003	0.15
38.) Contact spring(copper)	IE-0000015	0.50	66.) Voltage regulator ( LM2937ET)	AG-0000032	3.00
39.) Contact spring board (13.0x21.0x1.0mm)	BH-0000041	2.00	67.) Insulator(white) (washer)(3.0x6.0x3.0mm)(plastic)	ID-0000025	0.15
40.) Screw (M3x3.0mm)(round head)	IA-0000296	0.15	68.) Insulator(clear) (13.0x19.0x0.1mm)(single hole)	ID-0000024	0.15
41.) Bulbs(clear)(6v)(2) (60.0mm long wires w/red male 2pin plug) (grain of wheat)(number board lights)	CC-0000052	4.00	69.) Bolt(black) (8/32x15.0mm)(6.0x8.0mm shank) (1.8x10.0mm slotted head)	IA-0000088	1.00
42.) Bulb(clear)(mars light) (6v)(1)(60.0mm long wires w/white male 2pin plug) (ACL)(#545)(#548)(GN)(#525)(#527) (Milwaukee Road)(#37A)(#37C)	CB-0000003	3.00	70.) Spring(nickel) (8.0x6.0mm)(w/0.6mm thick wire)	IE-0000054	0.50
Bulb(clear)(6v)(1) (60.0mm long wires w/blue male 2pin plug) (grain of wheat)(headlight) (NYC)(#4066)(#4095)(RF&P)(#1001)(#1051)	CA-0000028	3.00	71.) Washer(black) (7.0x12.0x0.6mm)	ID-0000089	0.15
43.) Bulb(clear)(6v)(1) (60.0mm long wires w/blue male 2pin plug) (grain of wheat)(headlight) (NYC)(#4066)(#4095)(RF&P)(#1001)(#1051)	CA-0000028	3.00	72.) Volume pot (blue w/green board)(small)	BI-0000040	5.00
44.) Bulb(clear)(6v)(1) (60.0mm long wires w/yellow male 2pin plug) (grain of wheat)(cab light)	CG-0000051	3.00	73.) Ladder(black) (ACL)(#545)(#548)(GN)(#525)(#527) (Milwaukee Road)(#37A)(#37C) (NYC)(#4066)(#4095)(RF&P)(#1001)(#1051)	FC-2100469	3.00
45.) Screw (4/40x4.0mm)(round head)	IA-0000021	0.15	74.) Screw (6/32x12.0mm)(round head)	IA-0000062	0.15
46.) Bracket(black)(metal)	IH-0000227	3.00	75.) Bracket(Aluminum) (15.0x38.0mm)(16.5mm step) (for Proto-Sound® 2.0 boards)(tapped for 6/32 screw)	IH-0000327	4.00
47.) Grommet(black) (cupped)(rubber)	IH-0000144	0.15	76.) Boards (Proto-Sound® 2.0)(w/Rom memory)(5v board)	AE-0000001	*200.00
48.) Bracket(black)(metal) (22.0x48.2mm)(12.0mm step)	IH-0000326	4.00	77.) Tachboard(green) (standard)	AG-0000033	6.00
49.) Interior detail(gray)	FC-2100467	8.00	78.) Battery leads (200.0mm long wires w/small black 2pin male plug) (170.0mm long wires w/battery charger jack)	BC-0000093	6.00
50.) Engineer(black man) Engineer(white man)	FI-0000030 FI-0000001	5.00 5.00	79.) Battery(white) (8.4volts)(re-chargable)(nickel-cadium)	BG-4000001	10.00
51.) Brakeman(white man) Brakeman(black man)	FI-0000009 FI-0000033	5.00 5.00	80.) Wire nut(yellow)	BI-4500003	0.25
52.) Screw (M3x8.0mm)(round head)	IA-0000035	0.15	81.) Bracket(black) (battery)(vertical mount)(plastic)	IH-0000042	4.00
53.) Chassis(black) (lead A & trailing A units) ( has holes for battery charger jack)	DH-2100035	*20.00	82.) Screw (M3x6.0mm)(round head)	IA-0000016	0.15
54.) Spacer(black) (3.0x6.0x4.0mm)(plastic)	ID-0000071	0.50	83.) Battery charger jack (black)(complete)	BG-0000001	3.00
55.) Patch board(green) (w/yellow, blue, black, red, white male 2pin plugs)	AG-0000038	8.00	84.) Switch(large)	BB-0000006	5.00
56.) Screw (M3x8.0mm)(round head)	IA-0000035	0.15	85.) Screw (M2x4.0mm)(round head)	IA-0000058	0.15
57.) Screw (M3x14.0mm)(round head)(w/lock washer)	IA-0000012	0.15	86.) Wire strap(black) (metal)(small)	IH-0000012	1.00
58.) Screw(yellow zinc) (M2.5x6.0mm)(round head)(w/lock washer)	IA-0000001	0.15	87.) Spacer(black) (2.3x4.5x14.5mm)(metal)	ID-0000091	0.50
59.) Motor mount(black)	BI-0000048	15.00			
60.) Motor(RS-385PH) (8.0x24.0mm worm gear w/16.0mm long threads) (9.0x30.0mm black flywheel)	BE-0000065	25.00			

\*Requires Exchange  
All parts are priced as each





# E-8 A Unit ( lead ) Diesel Engine

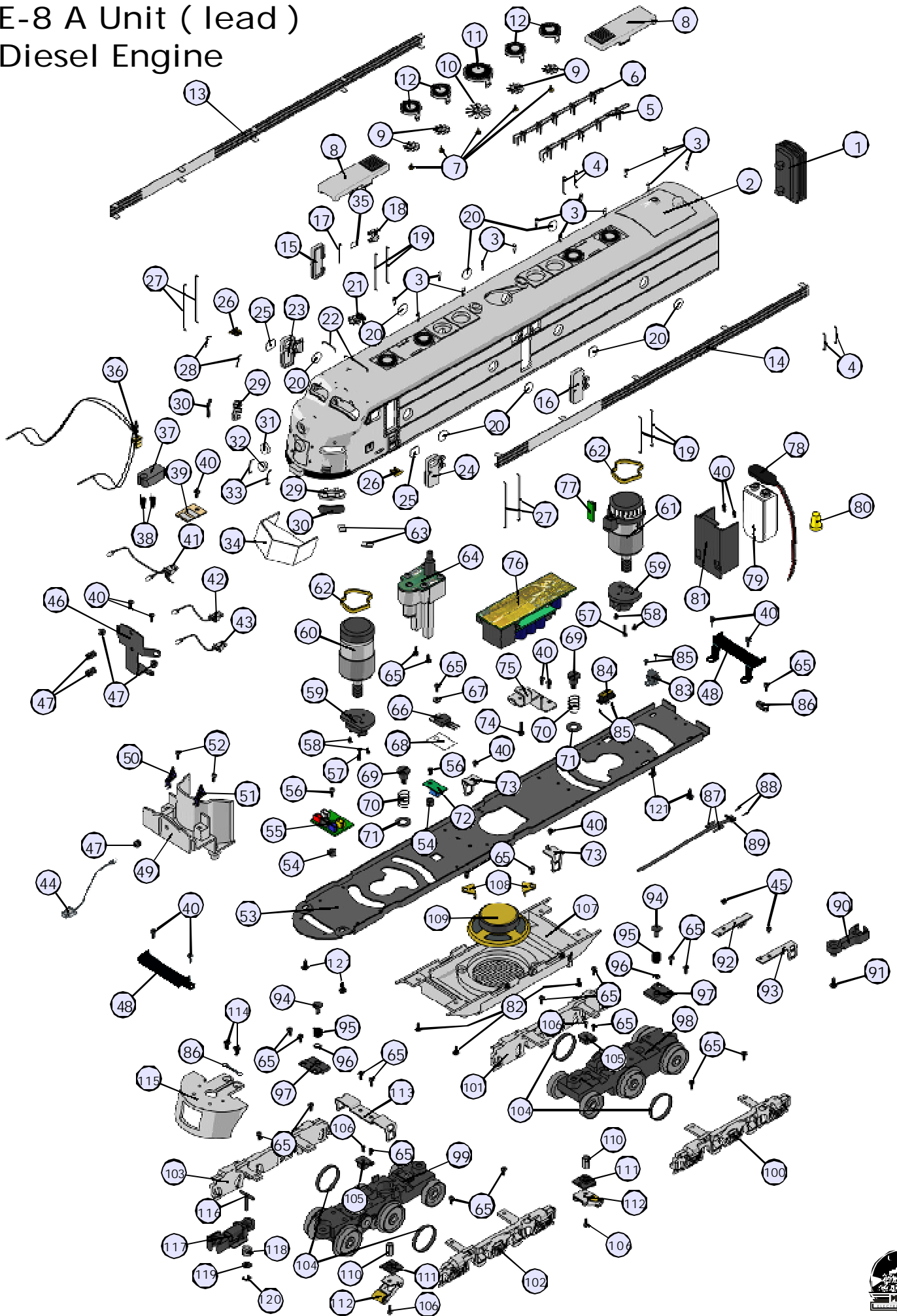
## Engine Parts

NameandNumber	Part #	\$Price PerUnit	NameandNumber	Part #	\$Price PerUnit
88.) Screw (M2x18.0mm)(roundhead)	IA-0000095	0.15	111.)Insulator(black) (pick-up)(bottom)(flat)(square)	BD-0000024	2.00
89.) Wireharness (PCboardw/blackfemale10pinplug)(complete)	BC-2100029	25.00	112.)Pick-up (8.0x11.0mmroller)(28.0mmlong)	BD-0000038	5.00
90.) Coupler(black) (43.6mmlong)(screwbase)(notchedonbottom) ( non-operating )	DD-0000036	3.00	113.)Ladder(black) ( ACL)(#545)(#548)(GN)(#525)(#527) (MilwaukeeRoad)(#37A)(#37C) (NYC)(#4066)(#4095)(RF&P)(#1001)(#1051)	FC-2100485	6.00
91.) Screw (4/40x6.0mm)(washerhead)	IA-0000028	0.15	114.)Screw (4/40x6.0mm)(flathead)	IA-0000038	0.15
92.) Ladder(black)(rightrear) ( ACL)(#545)(#548)(GN)(#525)(#527) (MilwaukeeRoad)(#37A)(#37C) (NYC)(#4066)(#4095)(RF&P)(#1001)(#1051)	FC-2100477	3.00	115.)Pilot(black) ( ACL)(#545)(#548) (MilwaukeeRoad)(#37A)(#37C)	DG-2130020	15.00
93.) Ladder(black)(leftrear) ( ACL)(#545)(#548)(GN)(#525)(#527) (MilwaukeeRoad)(#37A)(#37C) ( NYC)(#4066)(#4095)(RF&P)(#1001)(#1051)	FC-2100481	3.00	Pilot(green) (GN)(#525)(#527)	DG-2130027	15.00
94.) Pin(black) (3.0x9.2mm)(9.0mmhead)(1e-clipgroove)	IG-0000032	1.00	Pilot(darkgray) (NYC)(#4066)(#4095)	DG-2130028	15.00
95.) Spring(nickel) (6.5x6.0mm)(w/0.5mmthickwire)	IE-0000059	0.50	Pilot(blue) ( RF&P)(#1001)(#1051)	DG-2130029	15.00
96.) E-clip (2.5x6.0x0.5mm)	IF-0000004	0.15	116.)T-bar(black) (4.0x20.0mm)(plastic)	IG-0000001	0.50
97.) Bracket(black) (metal)(19.8x16.0mm)(3.2mmstep)	IH-0000147	3.00	117.)Proto-Coupler® (Proto-Coupler®2.0)(51.0mmlong)	DD-0000032	10.00
98.) Truck(black)(3axle) (powered)(w/supportpostatendoftruck) ( hasscrewholesforPCboardmounting)	DA-2100005	*35.00	118.)Spring(nickel) (6.5x14.0mm)(w/0.5mmthickwire)	IE-0000022	0.50
99.) Truck(black)(3axle) (powered)(w/supportpostatendoftruck)	DA-2100004	*35.00	119.)Washer(black) (4.5x10.0x1.0mm)(metal)	ID-0000090	0.15
100.)Truckside(black)(leftrear) ( ACL)(#545)(#548)(GN)(#525)(#527) (MilwaukeeRoad)(#37A)(#37C) (NYC)(#4066)(#4095)(RF&P)(#1001)(#1051)	DB-2100023	9.00	120.)E-clip(black) (3.0x8.0x0.5mm)(metal)	IF-0000002	0.15
101.)Truckside(black)(rightrear) ( ACL)(#545)(#548)(GN)(#525)(#527) (MilwaukeeRoad)(#37A)(#37C) (NYC)(#4066)(#4095)(RF&P)(#1001)(#1051)	DB-2100026	9.00	121.)Screw (M3x18.0mm)(washerhead)(self-drilling)	IA-0000107	0.15
102.)Truckside(black)(leftfront) ( ACL)(#545)(#548)(GN)(#525)(#527) (MilwaukeeRoad)(#37A)(#37C) (NYC)(#4066)(#4095)(RF&P)(#1001)(#1051)	DB-2100029	9.00	NS.) Wireharness (blackmale7pinplug) (120.0mmlongwiresw/standardtachboard) (130.0mmlongblack&redwires)	BC-0000137	10.00
103.)Truckside(black)(rightfront) ( ACL)(#545)(#548)(GN)(#525)(#527) (MilwaukeeRoad)(#37A)(#37C) (NYC)(#4066)(#4095)(RF&P)(#1001)(#1051)	DB-2100032	9.00	NS.) Wireharness(forspeaker) (110.0mmlongwiresw/whitemale2pinplug)	BC-0000138	3.00
104.)Tractiontire(black) (rubber)(4.0x17.0mm)	DE-0000018	0.75	NS.) Wireharness (140.0mmlongwiresw/blackmale2pinplug) (blackwireshieldonwires)(forProto-Coupler®)	BC-0000139	3.00
105.)Insulator(black) (top)(square)(pick-up)	BD-0000015	2.00	NS.) Wireharness (190.0mmlongred&blackwiresw/eyelets) (blackwireshieldonwires)(powerwiresfrompick-up)	BC-0000140	4.00
106.)Screw(nickel) (M3x6.0mm)(roundhead)	IA-0000015	0.15	NS.) Gasket(black) (speaker)(foam)(46.0x51.0mm)(4.5mmthick) ( for50.0mmspeakers)	IB-0000011	1.00
107.)Fuel tank(black) (4screwsformountingspeaker)(ACL)(#545) (GN)(#525)(MilwaukeeRoad)(#37A) (NYC)(#4066)(RF&P)(#1001)	FC-2100973	*20.00			
108.)Bracket (speaker)(9.5x12.0x5.4mm)	IH-0000231	1.00			
109.)Speaker(STAR) (FR-050-A1421)(16ohms)(5W)(50.0mmspeaker)	BF-0000022	10.00			
110.)Nut(nickel) (2.5x5.0x7.0mm)	IC-0000008	0.50			

\*RequiresExchange  
Allpartsarepricedaseach



# E-8 A Unit ( lead ) Diesel Engine



# E-8 B Unit Diesel Engine

## Engine Parts

NameandNumber	Part #	\$Price PerUnit	NameandNumber	Part #	\$Price PerUnit
1.) Diaphragm(black) (3rib)(26.0x50.0x10.0mm)(notchedtopcorners) (2centermountingplugs)	FI-000017	2.00	8.) Winterizationhatch(darkgray) (NYC)(#4066)(#4095)(#4100)	FC-2100993	6.00
2.) Shell(purple,black,silver) (ACL)(#504-B)(Bunit)	FC-2101056	*120.00	Winterizationhatch(darkblue) (RF&P)(#1001)(#1051)(#1005)	FC-2100994	6.00
Shell(gray,orange,black) (MilwaukeeRoad)(#37B)(Bunit)	FC-2101057	*120.00	9.) Fan(gray) (10blades)(small)(12.8mmindiameter)	FC-2100407	2.00
Shell(orange,green,yellow) (GN)(#525B)(Bunit)	FC-2101058	*120.00	10.) Fan(gray) (10blades)(large)(19.8mmindiameter)	FC-2100408	2.00
Shell(darkgray,lightgray) (NYC)(#4100)(Bunit)	FC-2101059	*120.00	11.) Fan shroud(black) (large)(ACL)(#545)(#548)(#504-B)	FC-2100409	6.00
Shell(blue,gray,gold) (RF&P)(#1005)(Bunit)	FC-2101060	*120.00	(MilwaukeeRoad)(#37A)(#37C)(#37B)	FC-2100995	6.00
3.) Liftring(black) (ACL)(#545)(#548)(#504-B)	FC-2100387	0.50	Fan shroud(darkgreen) (large)(GN)(#525)(#527)(#525B)	FC-2100996	6.00
(MilwaukeeRoad)(#37A)(#37C)(#37B)			Fan shroud(darkgray) (large)(NYC)(#4066)(#4095)(#4100)	FC-2100997	6.00
Liftring(darkgreen) (GN)(#525)(#527)(#525B)	FC-2160009	0.50	Fan shroud(darkblue) (large)(RF&P)(#1001)(#1051)(#1005)	FC-2100997	6.00
Liftring(darkgray) (NYC)(#4066)(#4095)(#4100)	FC-2100320	0.50	12.) Fan shroud(black) (small)(ACL)(#545)(#548)(#504-B)	FC-2100413	5.00
Liftring(darkblue) (RF&P)(#1001)(#1051)(#1005)	FC-2100980	0.50	(MilwaukeeRoad)(#37A)(#37C)(#37B)	FC-2100998	5.00
4.) Handrail(purple) (18.0mmlong)(rear)	FC-2100981	1.00	Fan shroud(darkgreen) (small)(GN)(#525)(#527)(#525B)	FC-2100999	5.00
(ACL)(#545)(#548)(#504-B)			Fan shroud(darkgray) (small)(NYC)(#4066)(#4095)(#4100)	FC-2100999	5.00
Handrail(gray) (18.0mmlong)(rear)	FC-2100982	1.00	Fan shroud(darkblue) (small)(RF&P)(#1001)(#1051)(#1005)	FC-2101000	5.00
(MilwaukeeRoad)(#37A)(#37C)(#37B)			13.) Vent ( nickel) (right)(11.0x415.0mm)(ACL)(#504-B)	FC-2101061	9.00
Handrail(darkgreen) (18.0mmlong)(rear)	FC-2100983	1.00	(MilwaukeeRoad)(#37B)(RF&P)(#1005)	FC-2101062	9.00
(GN)(#525)(#527)(#525B)			Vent ( darkgreen) (right)(11.0x415.0mm)(GN)(#525B)	FC-2101062	9.00
Handrail(darkgray) (18.0mmlong)(rear)	FC-2100984	1.00	Vent ( darkgray) (right)(11.0x415.0mm)(NYC)(#4100)	FC-2101063	9.00
(NYC)(#4066)(#4095)(#4100)			14.) Vent ( nickel) (left)(11.0x415.0mm)(ACL)(#504-B)	FC-2101064	9.00
Handrail(dark blue) (18.0mmlong)(rear)	FC-2100985	1.00	(MilwaukeeRoad)(#37B)(RF&P)(#1005)	FC-2101064	9.00
(RF&P)(#1001)(#1051)(#1005)			Vent ( darkgreen) (left)(11.0x415.0mm)(GN)(#525B)	FC-2101065	9.00
5.) Piping(black)(left) (w/stanchions)(ACL)(#545)(#548)(#504-B)	FC-2100395	4.00	Vent ( darkgray) (left)(11.0x415.0mm)(NYC)(#4100)	FC-2101066	9.00
(MilwaukeeRoad)(#37A)(#37C)(#37B)			15.) Door(purple,silver,yellow) (rightmiddle)(ACL)(#545)(#548)(#504-B)	FC-2101007	6.00
Piping(darkgreen)(left) (w/stanchions)(GN)(#525)(#527)(#525B)	FC-2100986	4.00	Door(gray,orange,yellow) (rightmiddle)	FC-2101008	6.00
Piping(darkgray)(left) (w/stanchions)(NYC)(#4066)(#4095)(#4100)	FC-2100987	4.00	(MilwaukeeRoad)(#37A)(#37C)(#37B)	FC-2101009	6.00
Piping(darkblue)(left) (w/stanchions)(RF&P)(#1001)(#1051)(#1005)	FC-2100988	4.00	Door (darkgreen,orange,yellow)(rightmiddle)	FC-2101009	6.00
6.) Piping(black)(right) (w/stanchions)(ACL)(#545)(#548)(#504-B)	FC-2100399	4.00	(GN)(#525)(#527)(#525B)	FC-2101010	6.00
(MilwaukeeRoad)(#37A)(#37C)(#37B)			Door (darkgray,lightgray,yellow)(rightmiddle)	FC-2101011	6.00
Piping(darkgreen)(right) (w/stanchions)(GN)(#525)(#527)(#525B)	FC-2100989	4.00	(NYC)(#4066)(#4095)(#4100)	FC-2101011	6.00
Piping(darkgray)(right) (w/stanchions)(NYC)(#4066)(#4095)(#4100)	FC-2100990	4.00	Door(darkblue,gray,yellow) (rightmiddle)(RF&P)(#1001)(#1051)(#1005)	FC-2101012	6.00
Piping(darkblue)(right) (w/stanchions)(RF&P)(#1001)(#1051)(#1005)	FC-2100991	4.00	16.) Door(purple,silver,yellow) (leftmiddle)(ACL)(#545)(#548)(#504-B)	FC-2101012	6.00
7.) Pin(black)(1.0x4.5mm) (0.8x3.5mmflathead)(1.5x1.5mmshank)	FC-2100528	1.00	Door(gray,orange,yellow) (leftmiddle)	FC-2101013	6.00
(pinonendhasribsforpressfit)(forfan)			(MilwaukeeRoad)(#37A)(#37C)(#37B)		
8.) Winterizationhatch(black) (ACL)(#545)(#548)(#504-B)	FC-2100403	6.00			
(MilwaukeeRoad)(#37A)(#37C)(#37B)					
Winterizationhatch(darkgreen) (GN)(#525)(#527)(#525B)	FC-2100992	6.00			

\*RequiresExchange  
Allpartsarepricedaseach



# E-8 B Unit Diesel Engine

## Engine Parts

Name and Number	Part #	\$Price Per Unit	Name and Number	Part #	\$Price Per Unit
16.) Door (darkgreen,orange,yellow)(leftmiddle) (GN)(#525)(#527)(#525B)	FC-2101014	6.00	35.) Ladder(black)(leftrear) (ACL)(#545)(#548)(#504-B) (GN)(#525)(#527)(#525B)	FC-2100481	3.00
Door (darkgray,lightgray,yellow)(leftmiddle) (NYC)(#4066)(#4095)(#4100)	FC-2101015	6.00	(MilwaukeeRoad)(#37A)(#37C)(#37B) (NYC)(#4066)(#4095)(#4100) (RF&P)(#1001)(#1051)(#1005)		
Door(darkblue,gray,yellow) (leftmiddle)(RF&P)(#1001)(#1051)(#1005)	FC-2101016	6.00	36.) Ladder(black)(rightrear) (ACL)(#545)(#548)(#504-B) (GN)(#525)(#527)(#525B)	FC-2100477	3.00
17.) Pin(nickel) (21.3mmlong)(doorhinge)	FC-2100365	0.25	(MilwaukeeRoad)(#37A)(#37C)(#37B) (NYC)(#4066)(#4095)(#4100) (RF&P)(#1001)(#1051)(#1005)		
18.) Hinge(gray)(door)(plastic)	FC-2100364	1.00	37.) Fuel tank(black) (4screwsholesformountingspeaker) (ACL)(#548)(#504-B)(GN)(#527)(#525B)	FC-2100974	*20.00
19.) Handrail(purple) (34.0mmlong)(middle) (ACL)(#545)(#548)(#504-B)	FC-2101017	1.00	(MilwaukeeRoad)(#37C)(#37B) (NYC)(#4095)(#4100)(RF&P)(#1051)(#1005)		
Handrail(gray) (34.0mmlong)(middle) (MilwaukeeRoad)(#37A)(#37C)(#37B)	FC-2101018	1.00	38.) Truckside(black)(leftrear) (ACL)(#545)(#548)(#504-B) (GN)(#525)(#527)(#525B)	DB-2100023	9.00
Handrail(darkgreen) (34.0mmlong)(middle) (GN)(#525)(#527)(#525B)	FC-2101019	1.00	(MilwaukeeRoad)(#37A)(#37C)(#37B) (NYC)(#4066)(#4095)(#4100) (RF&P)(#1001)(#1051)(#1005)		
Handrail(darkgray) (34.0mmlong)(middle) (NYC)(#4066)(#4095)(#4100)	FC-2101020	1.00	39.) Truckside(black)(rightrear) (ACL)(#545)(#548)(#504-B) (GN)(#525)(#527)(#525B)	DB-2100026	9.00
Handrail(darkblue) (34.0mmlong)(middle) (RF&P)(#1001)(#1051)(#1005)	FC-2101021	1.00	(MilwaukeeRoad)(#37A)(#37C)(#37B) (NYC)(#4066)(#4095)(#4100) (RF&P)(#1001)(#1051)(#1005)		
20.) Lens(clear) (portal)(2.7x10.0mm)	FA-0000066	2.00	40.) Truck(black)(3axle) (non-powered)(w/supportpostatendoftruck) (tappedforPCboard)	DA-2100006	*35.00
21.) Bolt (8/32x15.0mm)(6.0x8.0mmshank) (1.8x10.0mmslottedhead)	IA-0000088	1.00	41.) Wireharness (370.0mmlongwires) (w/blackmale10pinplug) (w/blackfemale10pinplugmountedonPCboard)	BC-0000142	12.00
22.) Spring(nickel) (8.5x12.0mm)(w/0.7mmthickwire)	IE-0000057	0.50	42.) Screw (M2x18.0mm)(roundhead)	IA-0000095	0.15
23.) Spring(nickel) (8.5x13.0mm)(w/0.5mmthickwire)	IE-0000058	0.50	43.) Spring(nickel) (door)(springisslightlybent)	IE-0000055	1.00
24.) Washer(black) (7.0x12.0x0.6mm)(metal)	ID-0000089	0.15	44.) Screw (M3x3.0mm)(roundhead)	IA-0000296	0.15
25.) Screw (4/40x4.0mm)(roundhead)	IA-0000021	0.15	45.) Bracket(black) (metal)(PCboardmounting)	IH-0000146	3.00
26.) Ladder(black) (ACL)(#545)(#548)(#504-B) (GN)(#525)(#527)(#525B)	FC-2100469	3.00	46.) Spacer(black) (2.3x4.5x14.5mm)(metal)	ID-0000091	0.50
(MilwaukeeRoad)(#37A)(#37C)(#37B) (NYC)(#4066)(#4095)(#4100) (RF&P)(#1001)(#1051)(#1005)			47.) Screw (M3x4.0mm)(roundhead)	IA-0000010	0.15
27.) Chassis(black)(Bunit)	DH-2100036	*20.00	48.) Screw (M3x6.0mm)(roundhead)	IA-0000016	0.15
28.) Wireharness (250.0mmlongwires)(w/1blackmale10pinplug) (w/1blackfemale10pinplugonPCboard)	BC-0000141	12.00			
29.) Screw (M3x18.0mm)(washerhead)(self-drilling)	IA-0000107	0.15			
30.) Screw (4/40x6.0mm)(roundhead)	IA-0000003	0.15			
31.) Wirestrap(black) (metal)(small)	IH-0000012	1.00			
32.) Coupler(non-operating) (43.6mmlong)(screwbase)(notchedonbottom)	DD-0000036	3.00			
33.) Spring(nickel) (centering)(longprongsonspring)	IE-0000056	0.50			
34.) Screw (M2.5x6.0mm)(washerhead)	IA-0000108	0.15			

\*RequiresExchange  
Allpartsarepricedaseach







# E-8 A Unit ( trailing ) Diesel Engine

## Engine Parts

NameandNumber	Part #	\$Price PerUnit	NameandNumber	Part #	\$Price PerUnit
1.) Diaphragm(black) (3rib)(26.0x50.0x10.0mm)(notchedtopcorners) (2centermountingplugs)	FI-000017	2.00	8.) Winterizationhatch(darkgray) (NYC)(#4066)(#4095)(#4100)	FC-2100993	6.00
2.) Shell(ACL)(#545)(#548) (purple,black,silver)	FC-2100975	*120.00	Winterizationhatch(darkblue) (RF&P)(#1001)(#1051)(#1005)	FC-2100994	6.00
Shell(gray,orange,black) (MilwaukeeRoad)(#37A)(#37C)	FC-2100976	*120.00	9.) Fan(gray) (10blades)(small)(12.8mmdiameter)	FC-2100407	2.00
Shell(orange,green,yellow) (GN)(#527)	FC-2101067	*120.00	10.) Fan(gray) (10blades)(large)(19.8mmdiameter)	FC-2100408	2.00
Shell(darkgray,lightgray) (NYC)(#4095)	FC-2101068	*120.00	11.) Fan shroud(black) (large)(ACL)(#545)(#548)(#504-B)	FC-2100409	6.00
Shell(blue,gray,gold) (RF&P)(#1051)	FC-2101069	*120.00	(MilwaukeeRoad)(#37A)(#37C)(#37B)	FC-2100995	6.00
3.) Liftring(black) (ACL)(#545)(#548)(#504-B)	FC-2100387	0.50	Fan shroud(darkgreen) (large)(GN)(#525)(#527)(#525B)	FC-2100996	6.00
(MilwaukeeRoad)(#37A)(#37C)(#37B)	FC-2160009	0.50	Fan shroud(darkgray) (large)(NYC)(#4066)(#4095)(#4100)	FC-2100997	6.00
Liftring(darkgreen) (GN)(#525)(#527)(#525B)	FC-2100320	0.50	Fan shroud(darkblue) (large)(RF&P)(#1001)(#1051)(#1005)	FC-2100413	5.00
Liftring(darkgray) (NYC)(#4066)(#4095)(#4100)	FC-2100980	0.50	12.) Fan shroud(black) (small)(ACL)(#545)(#548)(#504-B)	FC-2100413	5.00
Liftring(darkblue) (RF&P)(#1001)(#1051)(#1005)	FC-2100981	1.00	(MilwaukeeRoad)(#37A)(#37C)(#37B)	FC-2100998	5.00
4.) Handrail(purple) (18.0mmlong)(rear)	FC-2100982	1.00	Fan shroud(darkgreen) (small)(GN)(#525)(#527)(#525B)	FC-2100999	5.00
(ACL)(#545)(#548)(#504-B)	FC-2100983	1.00	Fan shroud(darkgray) (small)(NYC)(#4066)(#4095)(#4100)	FC-2101000	5.00
Handrail(gray) (18.0mmlong)(rear)	FC-2100984	1.00	Fan shroud(darkblue) (small)(RF&P)(#1001)(#1051)(#1005)	FC-2101001	9.00
(MilwaukeeRoad)(#37A)(#37C)(#37B)	FC-2100985	1.00	13.) Vent ( nickel) (right)(11.0x343.0mm)(ACL)(#545)(#548)	FC-2101002	9.00
Handrail(darkgreen) (18.0mmlong)(rear)	FC-2100986	4.00	(MilwaukeeRoad)(#37A)(#37C)	FC-2101003	9.00
(GN)(#525)(#527)(#525B)	FC-2100987	4.00	(RF&P)(#1001)(#1051)	FC-2101004	9.00
Handrail(darkgray) (18.0mmlong)(rear)	FC-2100988	4.00	Vent ( darkgreen) (left)(11.0x343.0mm)(GN)(#525)(#527)	FC-2101005	9.00
(NYC)(#4066)(#4095)(#4100)	FC-2100989	4.00	Vent ( darkgray) (left)(11.0x343.0mm)(NYC)(#4066)(#4095)	FC-2101006	9.00
Handrail(darkblue) (18.0mmlong)(rear)	FC-2100990	4.00	Vent ( darkgray) (left)(11.0x343.0mm)(NYC)(#4066)(#4095)	FC-2101007	6.00
(RF&P)(#1001)(#1051)(#1005)	FC-2100991	4.00	14.) Vent ( nickel) (left)(11.0x343.0mm)(ACL)(#545)(#548)	FC-2101008	6.00
5.) Piping(black)(left) (w/stanchions)(ACL)(#545)(#548)(#504-B)	FC-2100992	6.00	(MilwaukeeRoad)(#37A)(#37C)	FC-2101009	6.00
(MilwaukeeRoad)(#37A)(#37C)(#37B)	FC-2100993	6.00	(darkgreen,orange,yellow)(rightmiddle)	FC-2101010	6.00
Piping(darkgreen)(left) (w/stanchions)(GN)(#525)(#527)(#525B)	FC-2100994	6.00	(GN)(#525)(#527)(#525B)	FC-2101011	6.00
Piping(darkgray)(left) (w/stanchions)(NYC)(#4066)(#4095)(#4100)	FC-2100995	6.00	Door (darkgray,lightgray,yellow)(rightmiddle)	FC-2101012	6.00
Piping(darkblue)(left) (w/stanchions)(RF&P)(#1001)(#1051)(#1005)	FC-2100996	6.00	(NYC)(#4066)(#4095)(#4100)	FC-2101013	6.00
6.) Piping(black)(right) (w/stanchions)(ACL)(#545)(#548)(#504-B)	FC-2100997	6.00	Door(darkblue,gray,yellow) (rightmiddle)(RF&P)(#1001)(#1051)(#1005)	FC-2101012	6.00
(MilwaukeeRoad)(#37A)(#37C)(#37B)	FC-2100998	6.00	16.) Door(purple,silver,yellow) (leftmiddle)(ACL)(#545)(#548)(#504-B)	FC-2101013	6.00
Piping(darkgreen)(right) (w/stanchions)(GN)(#525)(#527)(#525B)	FC-2100999	6.00	Door(gray,orange,yellow) (leftmiddle)	FC-2101013	6.00
Piping(darkgray)(right) (w/stanchions)(NYC)(#4066)(#4095)(#4100)	FC-2101000	6.00	(MilwaukeeRoad)(#37A)(#37C)(#37B)		
Piping(darkblue)(right) (w/stanchions)(RF&P)(#1001)(#1051)(#1005)	FC-2101001	9.00			
7.) Pin(black)(1.0x4.5mm) (0.8x3.5mmflathead)(1.5x1.5mmshank) (pinonendhasribsforpressfit)(forfan)	FC-2100528	1.00			
8.) Winterizationhatch(black) (ACL)(#545)(#548)(#504-B)	FC-2100403	6.00			
(MilwaukeeRoad)(#37A)(#37C)(#37B)	FC-2100992	6.00			
Winterizationhatch(darkgreen) (GN)(#525)(#527)(#525B)	FC-2100992	6.00			

\*RequiresExchange  
Allpartsarepricedaseach



# E-8 A Unit ( trailing ) Diesel Engine

## Engine Parts

NameandNumber	Part #	\$Price PerUnit	NameandNumber	Part #	\$Price PerUnit
16.) Door (darkgreen,orange,yellow)(leftmiddle) (GN)(#525)(#527)(#525B)	FC-2101014	6.00	24.) Door (darkgreen,orange,yellow)(leftfront) (GN)(#525)(#527)	FC-2101038	6.00
Door (darkgray,lightgray,yellow)(leftmiddle) (NYC)(#4066)(#4095)(#4100)	FC-2101015	6.00	Door (darkgray,lightgray,yellow)(leftfront) (NYC)(#4066)(#4095)	FC-2101039	6.00
Door(darkblue,gray,yellow) (leftmiddle)(RF&P)(#1001)(#1051)(#1005)	FC-2101016	6.00	Door(darkblue,gray,yellow) (leftfront)(RF&P)(#1001)(#1051)	FC-2101040	6.00
17.) Pin(nickel) (21.3mmlong)(doorhinge)	FC-2100365	0.25	25.) Windowlens(clear) (7.3x8.7x2.5mm)(door)	FA-0000067	1.00
18.) Hinge(gray)(door)(plastic)	FC-2100364	1.00	26.) Builder's plate(brass,black) (EMD)(oval)	FC-2100453	3.00
19.) Handrail(purple) (34.0mmlong)(middle) (ACL)(#545)(#548)(#504-B)	FC-2101017	1.00	27.) Handrail(purple) (45.5mmlong)(ACL)(#545)(#548)	FC-2101041	1.00
Handrail(gray) (34.0mmlong)(middle) (MilwaukeeRoad)(#37A)(#37C)(#37B)	FC-2101018	1.00	Handrail(gray) (45.5mmlong)(MilwaukeeRoad)(#37A)(#37C)	FC-2101042	1.00
Handrail(darkgreen) (34.0mmlong)(middle) (GN)(#525)(#527)(#525B)	FC-2101019	1.00	Handrail(green) (45.5mmlong)(GN)(#525)(#527)	FC-2101043	1.00
Handrail(darkgray) (34.0mmlong)(middle) (NYC)(#4066)(#4095)(#4100)	FC-2101020	1.00	Handrail(darkgray) (45.5mmlong)(NYC)(#4066)(#4095)	FC-2101044	1.00
Handrail(darkblue) (34.0mmlong)(middle) (RF&P)(#1001)(#1051)(#1005)	FC-2101021	1.00	Handrail(darkblue) (45.5mmlong)(RF&P)(#1001)(#1051)	FC-2101045	1.00
20.) Lens(clear) (portal)(2.7x10.0mm)	FA-0000066	2.00	28.) Windshieldwipers(black)(plastic)	FC-2100458	1.00
21.) Airhorns(black) (3chimes)(ACL)(#545)(#548) (MilwaukeeRoad)(#37A)(#37C)	FC-2101022	3.00	29.) Numberboardhousing (silver)(ACL)(#545)(#548)	FC-2101046	4.00
Airhorns(darkgreen) (3chimes)(GN)(#525)(#527)	FC-2101023	3.00	Numberboardhousing (orange)(MilwaukeeRoad)(#37A)(#37C)	FC-2101047	4.00
Airhorns(darkgray) (3chimes)(NYC)(#4066)(#4095)	FC-2101024	3.00	Numberboardhousing (orange)(GN)(#525)(#527)	FC-2101048	4.00
Airhorns (blue) (3chimes)(RF&P)(#1001)(#1051)	FC-2101025	3.00	Numberboardhousing (darkgray)(NYC)(#4066)(#4095)	FC-2101049	4.00
22.) Handrail(purple) (23.0mmlong)(ACL)(#545)(#548)	FC-2101026	1.00	Numberboardhousing (gray)(RF&P)(#1001)(#1051)	FC-2101050	4.00
Handrail(gray) (23.0mmlong)(MilwaukeeRoad)(#37A)(#37C)	FC-2101027	1.00	30.) Numberboard (blackw/whitenumbers)(ACL)(#548)	FG-2100289	2.00
Handrail(darkgreen) (23.0mmlong)(GN)(#525)(#527)	FC-2101028	1.00	Numberboard (blackw/whitenumbers)(MilwaukeeRoad)(#37C)	FG-2100290	2.00
Handrail(darkgray) (23.0mmlong)(NYC)(#4066)(#4095)	FC-2101029	1.00	Numberboard (blackw/whitenumbers)(GN)(#527)	FG-2100291	2.00
Handrail(blue) (23.0mmlong)(RF&P)(#1001)(#1051)	FC-2101030	1.00	Numberboard (blackw/whitenumbers)(NYC)(#4095)	FG-2100292	2.00
23.) Door(purple,silver,yellow) (rightfront)(ACL)(#545)(#548)	FC-2101031	6.00	Numberboard (blackw/whitenumbers)(RF&P)(#1051)	FG-2100293	2.00
Door(gray)(rightfront) (MilwaukeeRoad)(#37A)(#37C)	FC-2101032	6.00	31.) Lens(clear) (8.5mm)(marslight/headlight) (ACL)(#545)(#548)(GN)(#525)(#527)	FA-0000068	2.00
Door (darkgreen,orange,yellow)(rightfront) (GN)(#525)(#527)	FC-2101033	6.00	(MilwaukeeRoad)(#37A)(#37C) (NYC)(#4066)(#4095)(RF&P)(#1001)(#1051)		
Door (darkgray,lightgray,yellow)(rightfront) (NYC)(#4066)(#4095)	FC-2101034	6.00	32.) Lens(clear) (8.0x7.0x6.0mm)(headlight) (ACL)(#545)(#548)(GN)(#525)(#527)		
Door(darkblue,gray,yellow) (rightfront)(RF&P)(#1001)(#1051)	FC-2101035	6.00	(MilwaukeeRoad)(#37A)(#37C)		
24.) Door(purple,silver,yellow) (leftfront)(ACL)(#545)(#548)	FC-2101036	6.00	33.) Handrail(purple) (12.5mmlong)(ACL)(#545)(#548)	FC-2101051	1.00
Door(gray)(leftfront) (MilwaukeeRoad)(#37A)(#37C)	FC-2101037	6.00	Handrail(maroon) (12.5mmlong)(MilwaukeeRoad)(#37A)(#37C)	FC-2101052	1.00
			Handrail(darkgreen) (12.5mmlong)(GN)(#525)(#527)	FC-2101053	1.00
			Handrail(darkgray) (12.5mmlong)(NYC)(#4066)(#4095)	FC-2101054	1.00

\*RequiresExchange  
Allpartsarepricedaseach



# E-8 A Unit ( trailing ) Diesel Engine

## Engine Parts

NameandNumber	Part #	\$Price PerUnit	NameandNumber	Part #	\$Price PerUnit
33.) Handrail(darkblue) (12.5mm long)(RF&P)(#1001)(#1051)	FC-2101055	1.00	57.) Motor(RS-385PH) (8.0x24.0mm worm gear w/16.0mm long threads)	BE-0000065	25.00
34.) Windshield(clear)	FA-0000069	6.00	(9.0x30.0mm black flywheel)		
35.) L.E.D.s(red)(6v)(2) (275.0mm long wires w/yellow male 2pin plug)	CE-0000018	5.00	58.) Motormount(black)	BI-0000048	15.00
36.) Contactspringbase (black)(plastic)(for 1 male 2pin plug)	BH-0000001	2.00	59.) Screw(yellow Zinc) (M2.5x6.0mm)(round head)(w/lock washer)	IA-0000001	0.15
37.) Contactspring(copper)	IE-0000015	0.50	60.) Screw (M3x14.0mm)(round head)(w/lock washer)	IA-0000012	0.15
38.) Contactspringboard (13.0x21.0x1.0mm)	BH-0000041	2.00	61.) Washer(black) (7.0x12.0x0.6mm)	ID-0000089	0.15
39.) Screw (M3x3.0mm)(round head)	IA-0000296	0.15	62.) Spring(nickel) (8.0x6.0mm)(w/0.6mm thick wire)	IE-0000054	0.50
40.) Bulbs(clear)(6v)(2) (60.0mm long wires w/red male 2pin plug) (grain of wheat)(number board slights)	CC-0000052	4.00	63.) Bolt(black) (8/32x15.0mm)(6.0x8.0mm shank) (1.8x10.0mm slotted head)	IA-0000088	1.00
41.) Bulb(clear)(mars light) (6v)(1)(60.0mm long wires w/white male 2pin plug) (ACL)(#545)(#548)(GN)(#525)(#527) (Milwaukee Road)(#37A)(#37C)	CB-0000003	3.00	64.) Ladder(black) (ACL)(#545)(#548)(GN)(#525)(#527) (Milwaukee Road)(#37A)(#37C) (NYC)(#4066)(#4095)(RF&P)(#1001)(#1051)	FC-2100469	3.00
Bulb(clear)(6v)(1) (60.0mm long wires w/blue male 2pin plug) (grain of wheat)(headlight) (NYC)(#4066)(#4095)(RF&P)(#1001)(#1051)	CA-0000028	3.00	65.) Spring(nickel) (door)(spring is slightly bent)	IE-0000055	1.00
42.) Bulb(clear)(6v)(1) (60.0mm long wires w/blue male 2pin plug) (grain of wheat)(headlight) (NYC)(#4066)(#4095)(RF&P)(#1001)(#1051)	CA-0000028	3.00	66.) Bracket(Aluminum) (made for mounting to voltage regulators) (20.0x59.0x27.5mm)(9.0mm step) (for mounting Proto-Sound® 2.0 slave board)	IH-0000328	5.00
43.) Screw (M3x6.0mm)(round head)	IA-0000016	0.15	67.) Screw (4/40x6.0mm)(round head)	IA-0000003	0.15
44.) Bracket(black)(metal)	IH-0000227	3.00	68.) Insulator(white) (washer)(3.0x6.0x3.0mm)(plastic)	ID-0000025	0.15
45.) Grommet(black) (cupped)(rubber)	IH-0000144	0.15	69.) Insulator(clear) (13.0x19.0x0.1mm)(single hole)	ID-0000024	0.15
46.) Pilot(black) (ACL)(#545)(#548) (Milwaukee Road)(#37A)(#37C)	DG-2130020	15.00	70.) Screw (M3x4.0mm)(round head)	IA-0000010	0.15
Pilot(green) (GN)(#525)(#527)	DG-2130027	15.00	71.) Smokeunit (Proto-Sound® 2.0)(20.5mm high smoke stack) (26.3mm long mounting posts)	AA-0000026	50.00
Pilot(dark gray) (NYC)(#4066)(#4095)	DG-2130028	15.00	72.) Wireclip(white) (plastic)(4.0x9.0x3.5mm)	IH-0000313	1.00
Pilot(blue) (RF&P)(#1001)(#1051)	DG-2130029	15.00	73.) Slaveboard(green) (Proto-Sound® 2.0)	AC-0000011	*60.00
47.) Bulb(clear)(6v)(1) (60.0mm long wires w/yellow male 2pin plug) (grain of wheat)(cab light)	CG-0000051	3.00	74.) Wirenut(yellow)	BI-4500003	0.25
48.) Screw (M3x8.0mm)(round head)	IA-0000035	0.15	75.) Bracket(black)(metal) (22.0x48.2mm)(12.0mm step)	IH-0000326	4.00
49.) Engineer(blackman)	FI-0000030	5.00	76.) Screw (4/40x4.0mm)(round head)	IA-0000021	0.15
Engineer(whiteman)	FI-0000001	5.00	77.) Screw (M3x18.0mm)(washer head)(self-drilling)	IA-0000107	0.15
50.) Brakeman (whiteman)	FI-0000009	5.00	78.) Wirestrap(black) (metal)(small)	IH-0000012	1.00
Brakeman (blackman)	FI-0000033	5.00	79.) Wireharness (black male 10pin plug) (290.0mm long wires w/flat black male 10pin plug)	BC-2100030	10.00
51.) Interior detail(gray)	FC-2100467	8.00	80.) T-bar (black) (4.0x20.0mm)(plastic)	IG-0000001	0.50
52.) Chassis(detail) (lead A & trailing A units) (has holes for battery charger jack)	DH-2100035	*20.00	81.) Coupler(black) (43.6mm long)(T-bar mounting base)(non-operating)	DD-0000037	3.00
53.) Spacer(black) (3.0x6.0x4.0mm)(plastic)	ID-0000071	0.50	82.) Proto-Coupler® (Proto-Coupler® 2.0)(51.0mm long)	DD-0000032	10.00
54.) Patchboard(green) (yellow, green, black, red & white female 2pin plugs)	AG-0000063	8.00	83.) Spring (6.5x14.0mm)(w/0.5mm thick wire)	IE-0000022	0.50
55.) Screw (4/40x6.0mm)(flat head)	IA-0000038	0.15			
56.) Rubberband	BI-4500004	0.50			

\*Requires Exchange  
All parts are priced as each





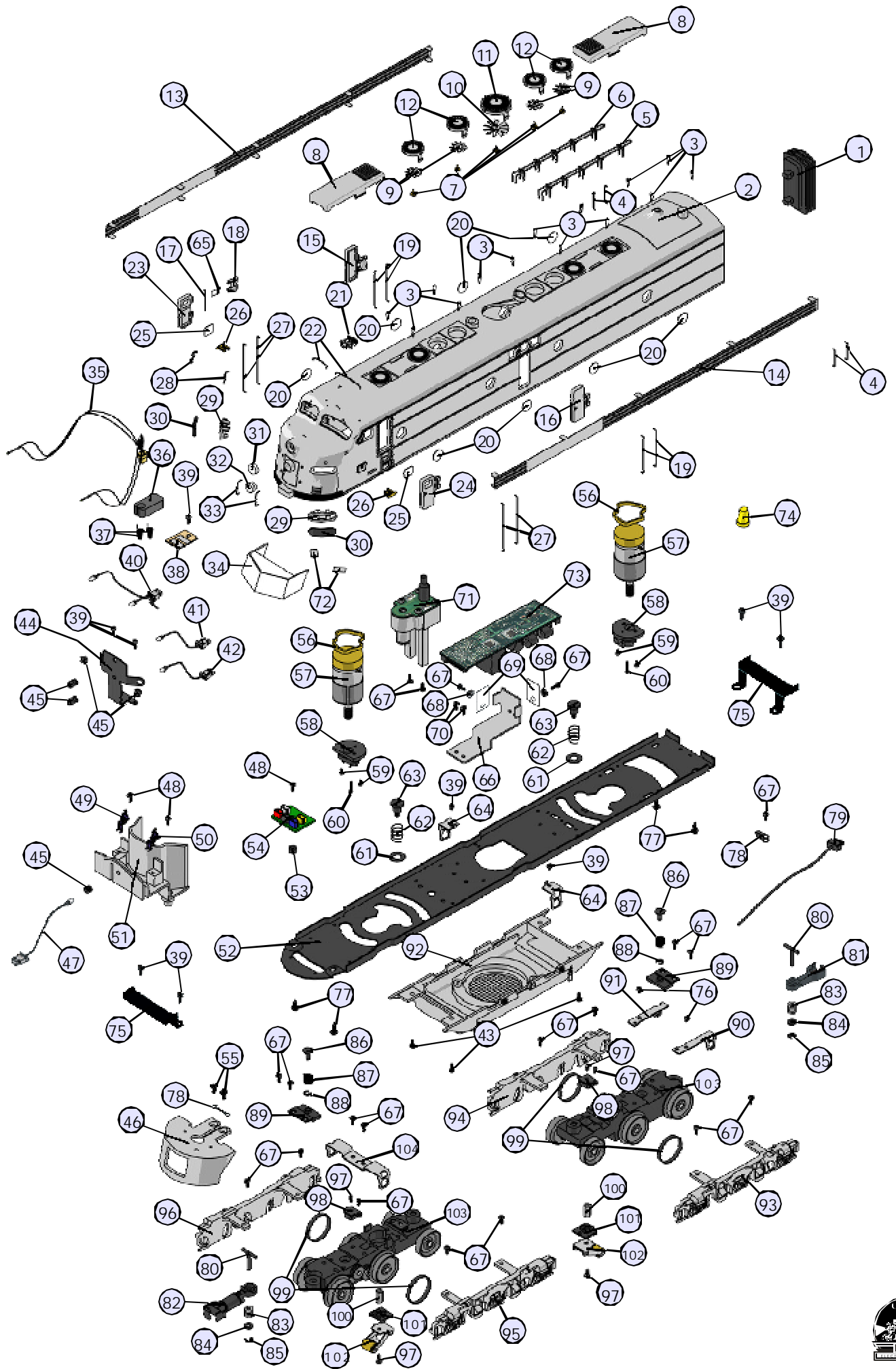
# E-8 A Unit ( trailing ) Diesel Engine

## Engine Parts

NameandNumber	Part#	\$PricePerUnit	NameandNumber	Part#	\$PricePerUnit
84.) Washer (4.5x10.0x1.0mm)	ID-0000090	0.15	NS.) Wireharness (blackmale8pinplug) (w/140.0mmlongred&blackwires)	BC-0000144	4.00
85.) E-clip (3.0x8.0x0.5mm)	IF-0000002	0.15	NS.) Wireharness (blackmale5pinplug) (w/180.0mm&270.0mmlongyellow&whitewires)	BC-0000145	4.00
86.) Pin(black) (3.0x9.2mm)(9.0mmhead)(1e-clipgroove)	IG-0000032	1.00	NS.) Wireharness (blackmale4pinplug) (w/210.0mmlonggreen&graywires) (w/220.0mmlongpurple&brownwires)	BC-0000146	4.00
87.) Spring(nickel) (6.5x6.0mm)(w/0.5mmthickwire)	IE-0000059	0.50	NS.) Wireharness (140.0mmlongwiresw/blackmale2pinplug) (blackwireshieldonwires)(forProto-Coupler®)	BC-0000139	3.00
88.) E-clip (2.5x6.0x0.5mm)	IF-0000004	0.15	NS.) Wireharness (190.0mmlongred&blackwiresw/eyelets) (blackwireshieldonwires)(powerwiresfrompick-up)	BC-0000140	4.00
89.) Bracket(black) (metal)(19.8x16.0mm)(3.2mmstep)	IH-0000147	3.00			
90.) Ladder(black)(leftrear) (ACL)(#545)(#548)(GN)(#525)(#527) (MilwaukeeRoad)(#37A)(#37C) (NYC)(#4066)(#4095)(RF&P)(#1001)(#1051)	FC-2100481	3.00			
91.) Ladder(black)(rightrear) (ACL)(#545)(#548)(GN)(#525)(#527) (MilwaukeeRoad)(#37A)(#37C) (NYC)(#4066)(#4095)(RF&P)(#1001)(#1051)	FC-2100477	3.00			
92.) Fuel tank(black) (4screwsholesformountingspeaker) (ACL)(#548)(#504-B)(GN)(#527)(#525B) (MilwaukeeRoad)(#37C)(#37B) (NYC)(#4095)(#4100)(RF&P)(#1051)(#1005)	FC-2100974	*20.00			
93.) Truckside(black)(leftrear) (ACL)(#545)(#548)(GN)(#525)(#527) (MilwaukeeRoad)(#37A)(#37C) (NYC)(#4066)(#4095)(RF&P)(#1001)(#1051)	DB-2100023	9.00			
94.) Truckside(black)(rightrear) (ACL)(#545)(#548)(GN)(#525)(#527) (MilwaukeeRoad)(#37A)(#37C) (NYC)(#4066)(#4095)(RF&P)(#1001)(#1051)	DB-2100026	9.00			
95.) Truckside(black)(leftfront) (ACL)(#545)(#548)(GN)(#525)(#527) (MilwaukeeRoad)(#37A)(#37C) (NYC)(#4066)(#4095)(RF&P)(#1001)(#1051)	DB-2100029	9.00			
96.) Truckside(black)(rightfront) (ACL)(#545)(#548)(GN)(#525)(#527) (MilwaukeeRoad)(#37A)(#37C) (NYC)(#4066)(#4095)(RF&P)(#1001)(#1051)	DB-2100032	9.00			
97.) Screw(nickel) (M3x6.0mm)(roundhead)	IA-0000015	0.15			
98.) Insulator(black) (top)(square)(pick-up)	BD-0000015	2.00			
99.) Tractiontire(black) (rubber)(4.0x17.0mm)	DE-0000018	0.75			
100.) Nut(nickel) (2.5x5.0x7.0mm)	IC-0000008	0.50			
101.) Insulator(black) (pick-up)(bottom)(flat)(square)	BD-0000024	2.00			
102.) Pick-up (8.0x11.0mmroller)(28.0mmlong)	BD-0000038	5.00			
103.) Truck(black)(3axle) (powered)(w/supportpostatendoftruck) (hasscrewsholesforPCboardmounting)	DA-2100005	*35.00			
104.) Ladder(black) (ACL)(#545)(#548)(GN)(#525)(#527) (MilwaukeeRoad)(#37A)(#37C) (NYC)(#4066)(#4095)(RF&P)(#1001)(#1051)	FC-2100485	6.00			
NS.) Wireharness (blackmale8pinplug)	BC-0000143	15.00			

\*RequiresExchange  
Allpartsarepricedaseach





# Smoke Unit Proto-Sound® 2.0

## Smoke Unit Parts

Name and Number	Part #	\$Price Per Unit
1.) Screw (4/40x6.0mm)(roundhead)	IA-0000003	0.15
2.) Gasket(burntorange) (forstandardsmokeunit)(25.0x37.0mm)(0.5mmthick)	IB-0000006	2.00
3.) Screw (M1.4x3.0mm)(roundhead)	IA-0000120	0.15
4.) Fan impeller(black) (plastic)(forsmokeunit)	AI-0000019	2.00
5.) Heating elements (forsmokeunit)	AI-0000018	
6.) Wick (white) (forsmokeunit)(4"long)(soldasapair) (requires2wickspersmokeunit)	AA-0000001	1.00
7.) Motor (forsmokeunit)(wireharnessnotincluded)	BE-0000041	5.00

All parts are priced as each

